

世图兹精密空调 C7000 控制器 MODBUS 协议 数据点表格: **FULLSIZE**



返回 [OK]

全球地址	255
接口	RS485
协议	MODBUS
数据点表格	FULLSIZE
握手	--
波特率	9600

0 255 14:54

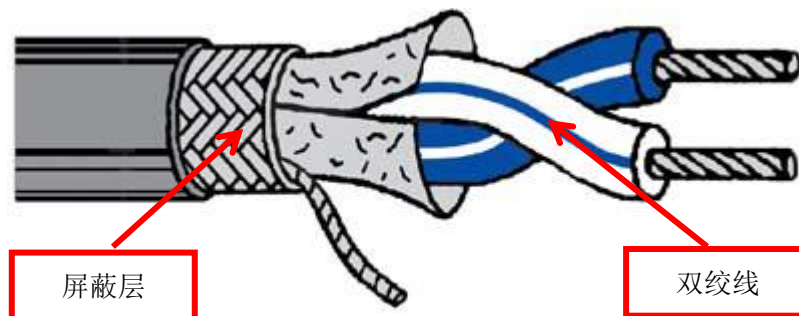
目 录

机组 BMS 接线安装规范.....	3
1. 联机线	3
2. 接线	4
3. 屏蔽	5
4. 总线末端	6
5. C7000 IO 板 拨码开关地址设定.....	7
6. 联机方式和数量	8
C7000 主板 MODBUS 协议（数据点表格：FULLSIZE）	9
C7000AT 板 BMS 参数设置.....	9
C7000 IO 板 BMS 参数设置	10
CPD/U ***A 型机组.....	12
ASD/U ***A 型机组.....	13
ASD/U ***AS 型机组	14
ASD/U ***G 型机组.....	15
ASD/U ***CW/CWU 型机组.....	17
ASD/U ***CW2 型机组	18
ASD/U ***ACW 型机组	20
ASD/U ***GCW 型机组	22
ASD/U ***GE 和 ALD/U ***GE 型机组.....	24
ASD/U ***GES 和 ALD/U ***GES 型机组	26
CRS ***A 型机组	28
CRS ***AS 型机组.....	30
CRS ***CW 型机组	32
CRS ***GES 型机组	34
ModScan32 软件	36
Modbus Poll 软件.....	39
ComMonitor 串口调试软件.....	43
Commix 工业控制串口调试软件	44

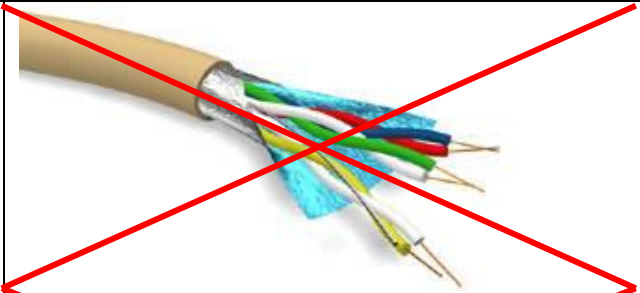
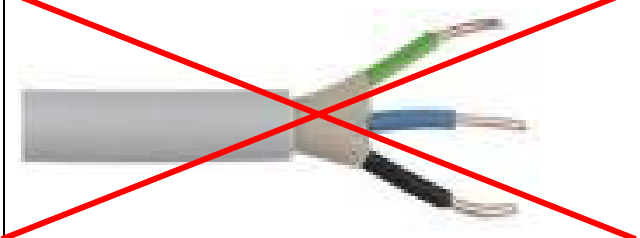
机组 BMS 接线安装规范

1. 联机线

机组联机必须使用双绞屏蔽线 AWG24(导线外径 0.511mm, 截面积 0.2047mm², 电阻值 89.4Ω/km) (世图兹配件编号: M00624)

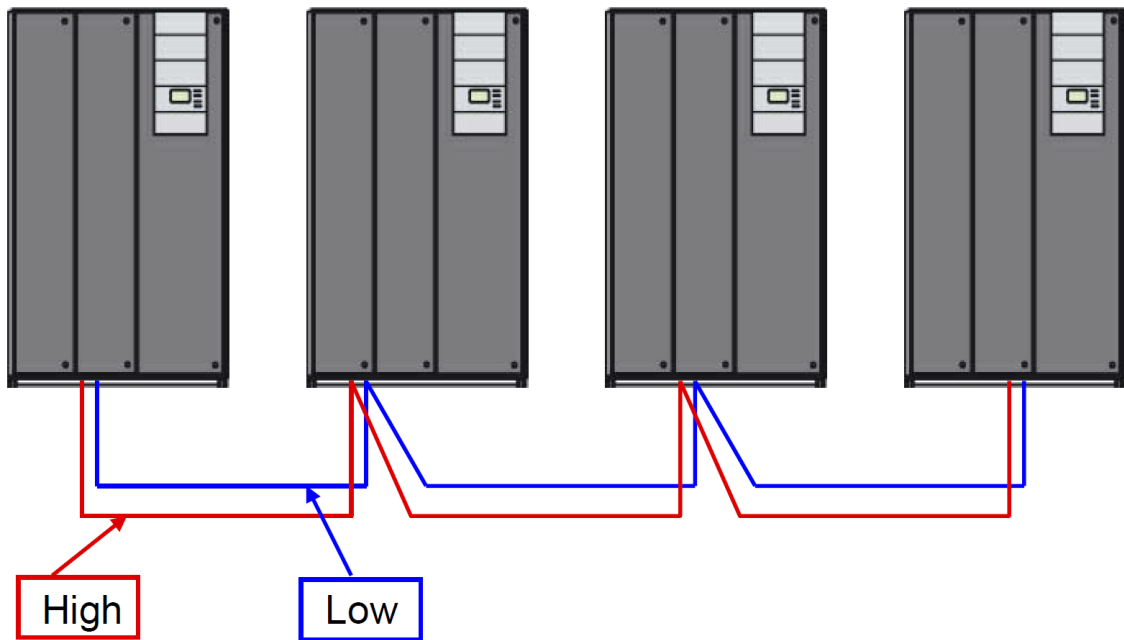


不符合规范的线缆

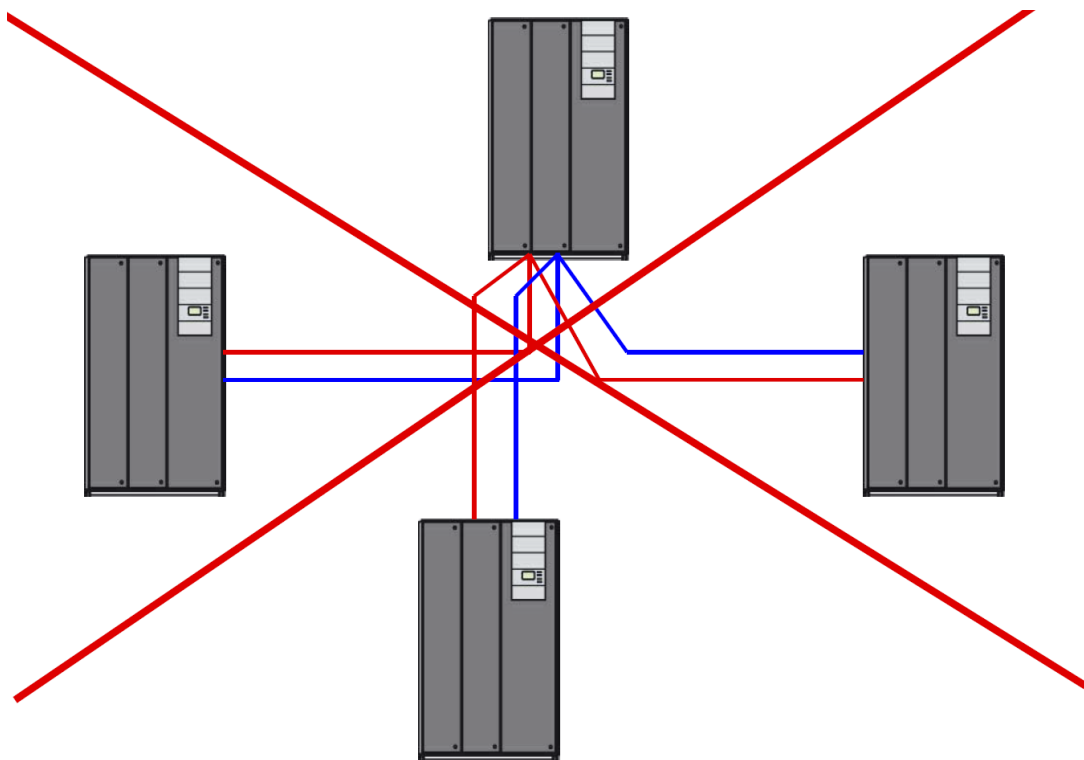
电话线	
电源线	

2. 接线

机组接线方式必须是串联连接

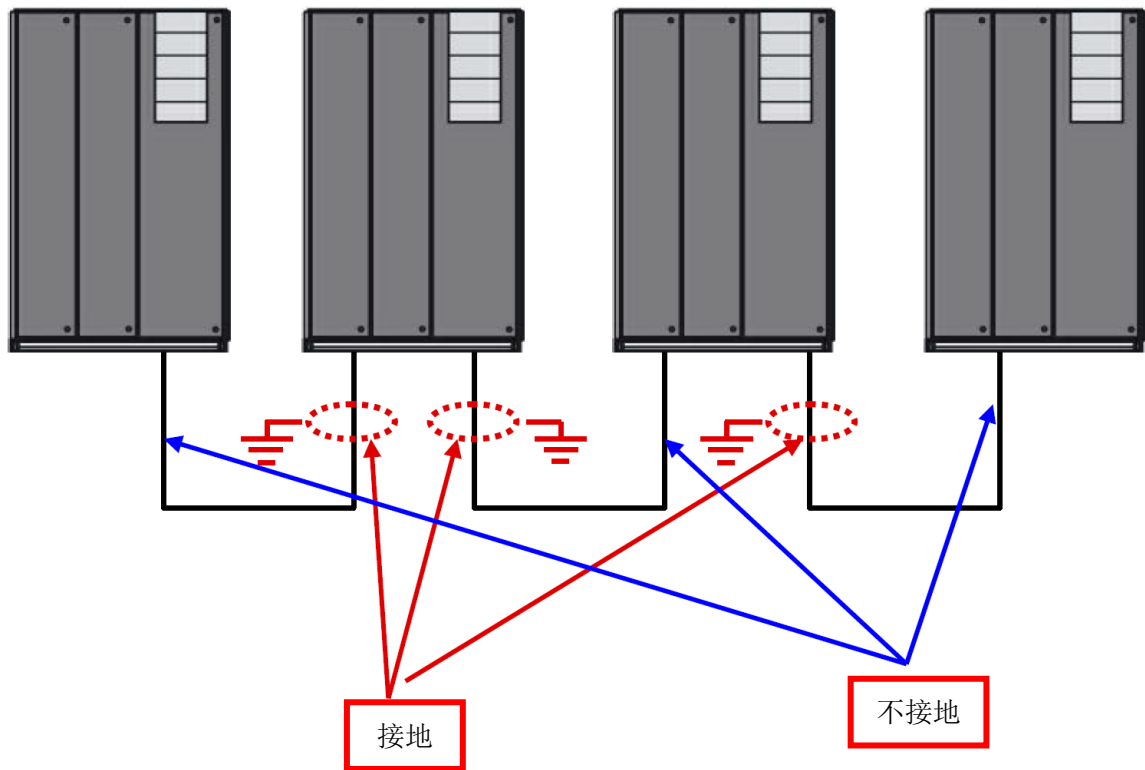


机组接线方式不允许是 Y 或 T 型连接



3. 屏蔽

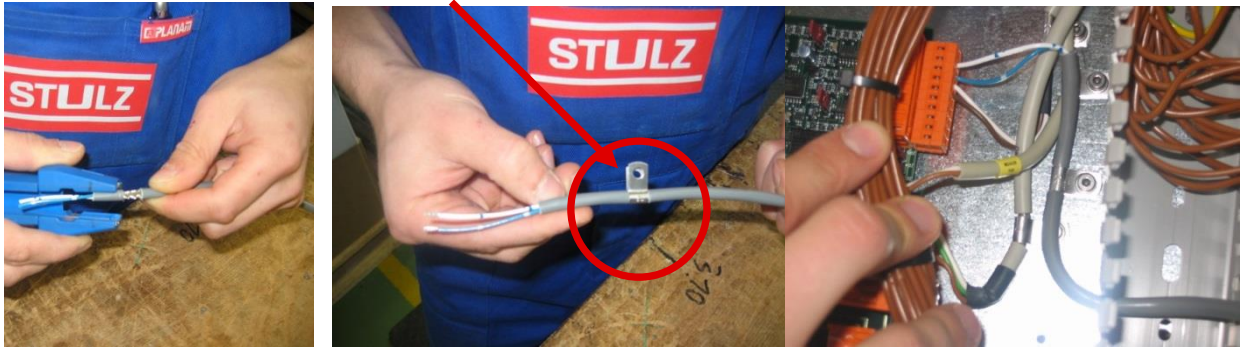
由于不同的接地电位的结果，双绞屏蔽线的接地必须仅在一台机组上，不能两端同时接地，否则补偿电流会影响总线通讯。



首先需要拨开电缆和移除金属丝网，然后必须去掉铝箔和塑料线。

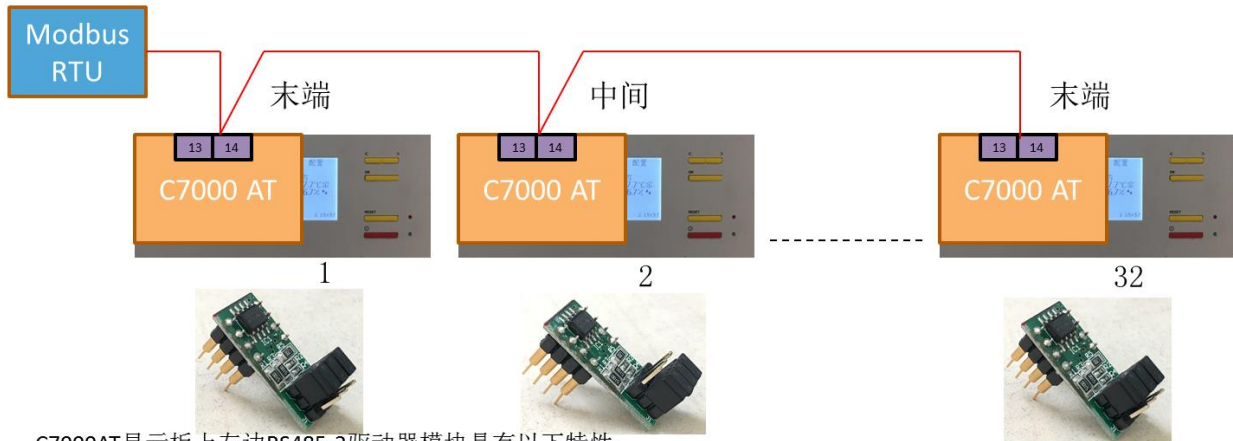


对于安全的屏蔽必须拆除 3-4 厘米的绝缘皮，然后移动末端的绝缘皮空出 2cm 的空间安装一个金属的夹子。最后将金属夹固定到电控箱内。



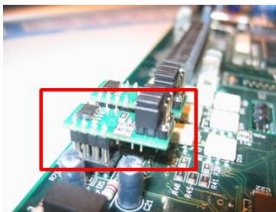
4. 总线末端

总线末端设置是在两端而不是中间。



C7000AT显示板上左边RS485-2驱动器模块具有以下特性:

1. 一个静态总线终端 (120 Ohm), 可通过跳线器激活。
2. 一条回路, 为总线设定偏置。通过两个跳线器, 低偏置 (总线中部) 和高偏置 (总线末端) 均可设定。
3. 保护数据线免受静电放电(ESD)冲击



RS485总线末端的关联项

J3跳线器**激活**
终端电阻120Ω

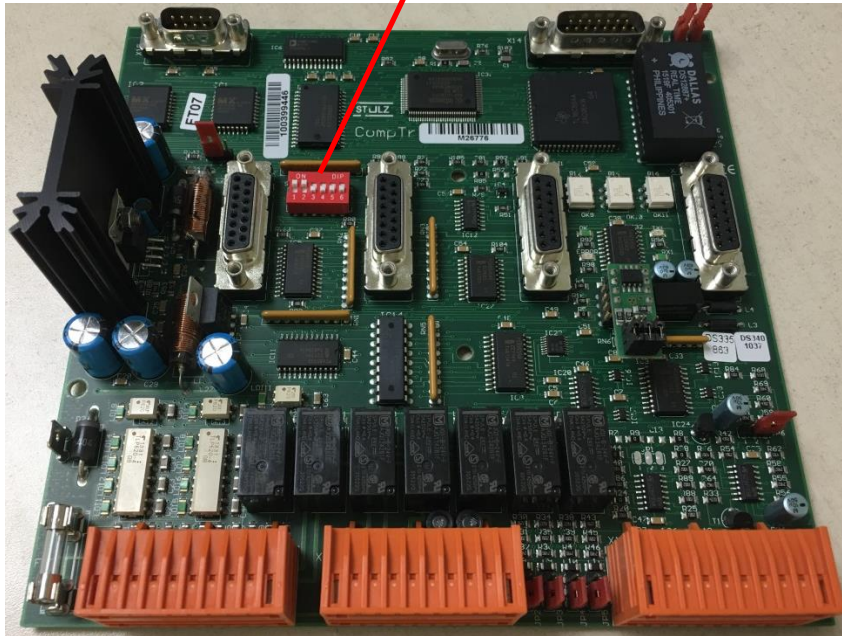
J1、J2跳线器设定为**高偏置**

RS485总线中部的关联项

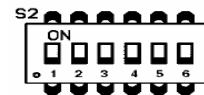
J3跳线器**不激活**
终端电阻120Ω

J1、J2跳线器设定为**低偏置**

5. C7000 IO 板 拨码开关地址设定

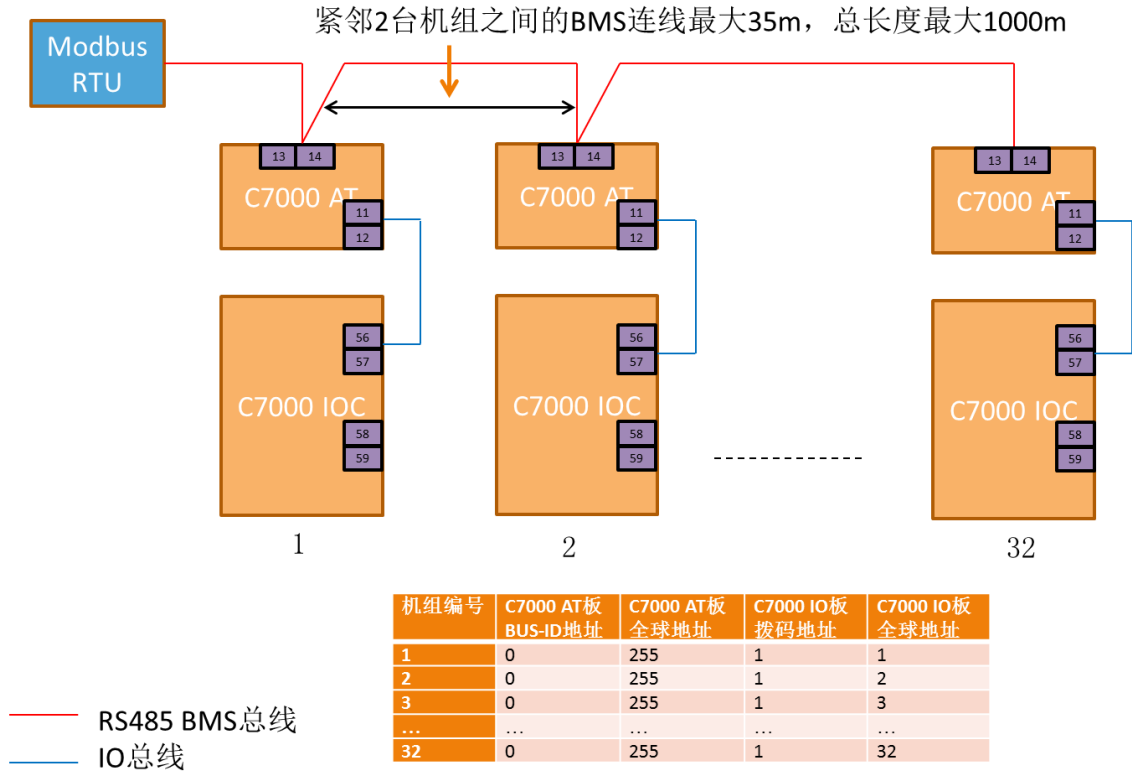


Bus ID	DIP-switch				
	1	2	3	4	5
0	0	0	0	0	0
1	1	0	0	0	0
2	0	1	0	0	0
3	1	1	0	0	0
4	0	0	1	0	0
5	1	0	1	0	0
6	0	1	1	0	0
7	1	1	1	0	0
8	0	0	0	1	0
9	1	0	0	1	0
10	0	1	0	1	0
11	1	1	0	1	0
12	0	0	1	1	0
13	1	0	1	1	0
14	0	1	1	1	0
15	1	1	1	1	0
16	0	0	0	0	1
17	1	0	0	0	1
18	0	1	0	0	1
19	1	1	0	0	1
20	0	0	1	0	1
21	1	0	1	0	1
22	0	1	1	0	1
23	1	1	1	0	1
24	0	0	0	1	1
25	1	0	0	1	1
26	0	1	0	1	1
27	1	1	0	1	1
28	0	0	1	1	1
29	1	0	1	1	1
30	0	1	1	1	1
31	1	1	1	1	1

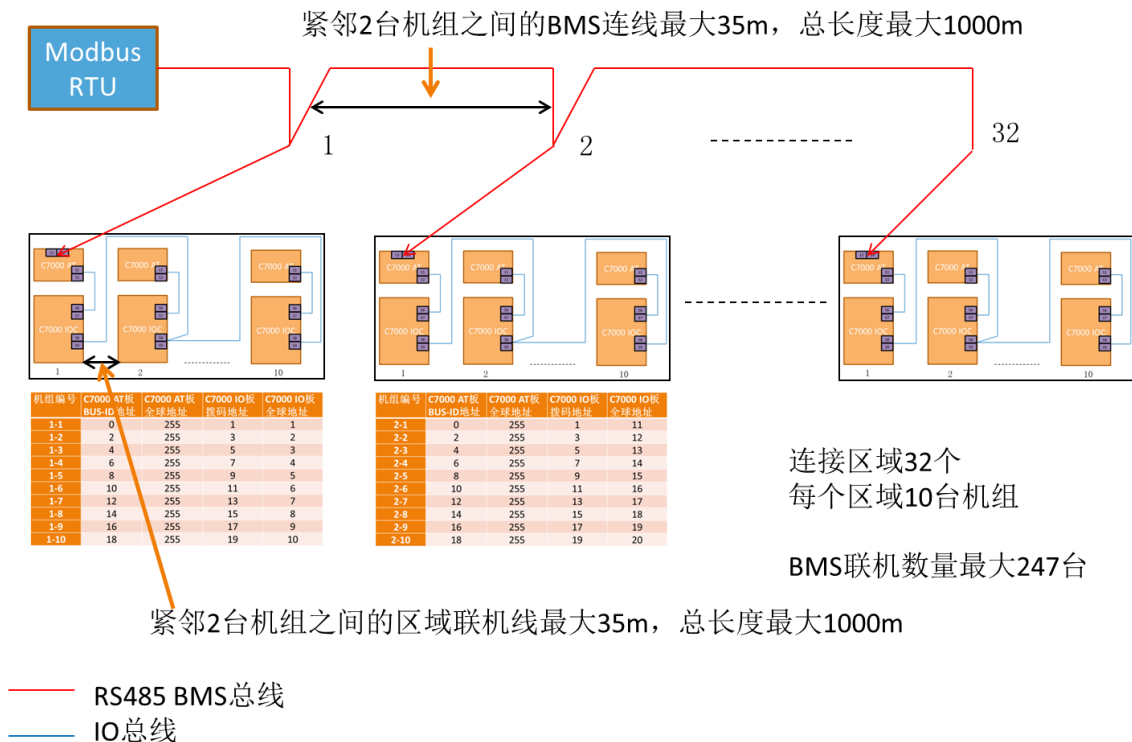


6. 联机方式和数量

- ▶ 每台机组都配置 C7000AT 和 C7000 IO 控制器，机组之间没有联机，1 个 Modbus 总线最多连接 32 台机组

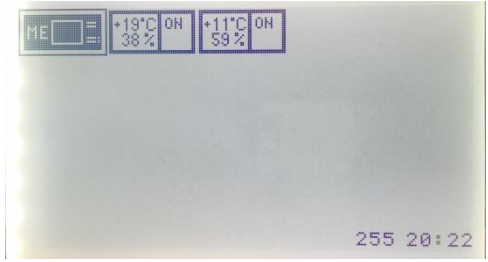
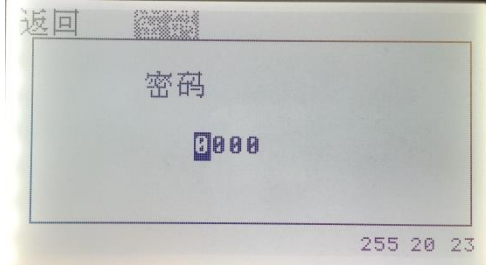
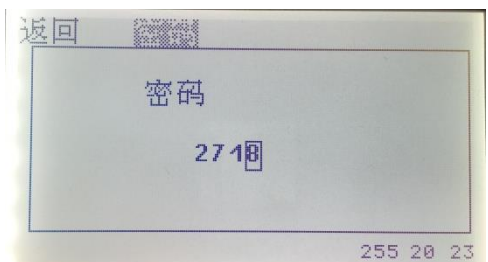
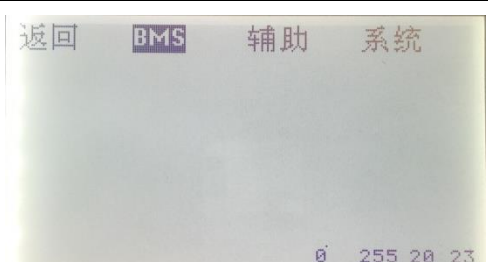



- ▶ 每台机组都配置 C7000AT 和 C7000 IO 控制器，机组之间进行了联机，1 个 Modbus 总线最多连接 32 个区域（每个区域最多 10 台机组），联机数量最多 247 台

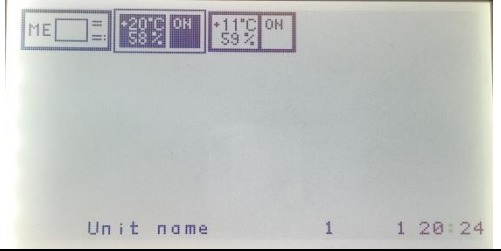
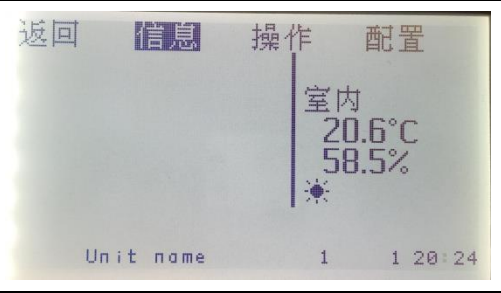
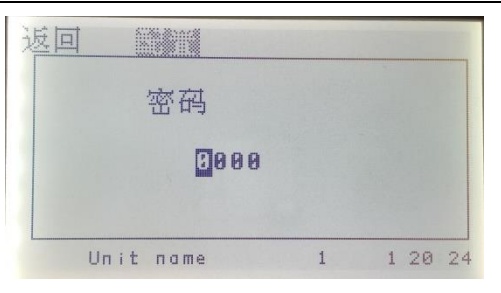
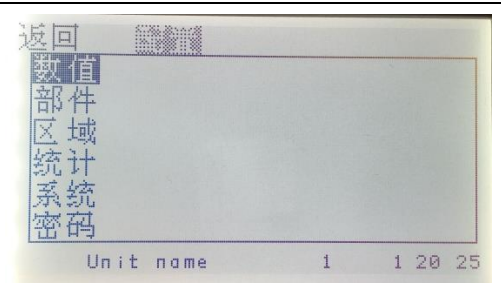
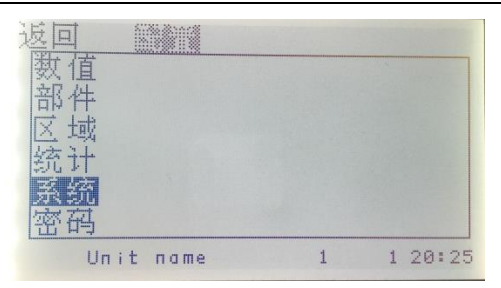


C7000 主板 MODBUS 协议（数据点表格：FULLSIZE）

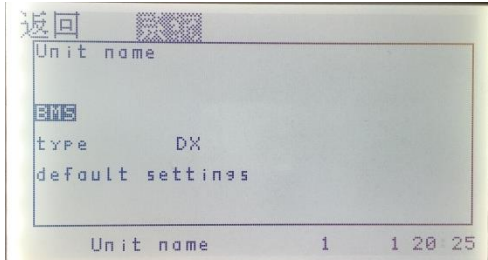
C7000AT 板 BMS 参数设置

1、返回主界面，按<键选择 ME，然后按 OK 键>	
2、出现密码 0000	
3、输入密码 2718，然后按>键，将显示 C7000AT 的主菜单。	
4、选择 BMS，按 OK 键	
5、按右图进行参数设定	

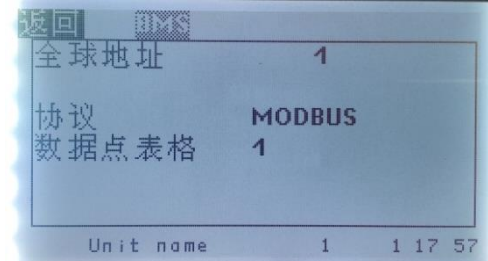
C7000 IO 板 BMS 参数设置

1、按<键或>键选择 C7000 IOC 主板，然后按 OK 键	
2、出现 C7000 IOC 主板的主菜单	
3、按<键或>键选择配置菜单，然后按 OK 键	
4、出现密码 0000，按>键 5 次，	
5、进入配置子菜单	
6、按>键选择系统，然后按 OK 键	

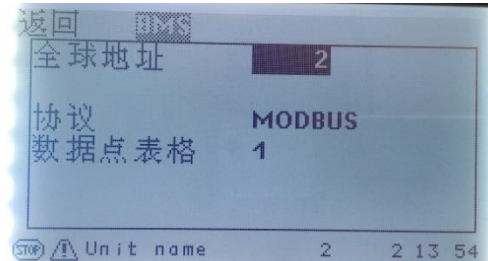
7、进入系统子菜单，选择 BMS，然后按 OK 键



8、按右图参数进行设定



9、重复上面步骤对第二台机组进行设定,并以此类推



CPD/U ***A 型机组

MODBU 地址	Description	中文描述	Modbus range	mapped meaning	Modbus function
1000	PC-STOP (monitoring), BMS stop 1	BMS 开机 (0), 关机 (1)	0/1	maybe on/unit off	1, (2), 5
1010	common alarm	公共报警	0/1	no alarm / alarm	2, (1)
1013	Unit on / off	机组开机/关机状态	0/1	off/on	2, (1)
1754	unit cooling	制冷模式	0/1	inactive/active	2, (1)
1755	unit heating	加热模式	0/1	inactive/active	2, (1)
1756	unit humidification	加湿模式	0/1	inactive/active	2, (1)
1757	unit dehumidification	除湿模式	0/1	inactive/active	2, (1)
2200	airflow 1	气流报警	0/1	ok/alarm	2, (1)
2203	highpressure 1	回路 1 高压报警	0/1	ok/alarm	2, (1)
2204	highpressure 2	回路 2 高压报警	0/1	ok/alarm	2, (1)
2206	water detector	漏水报警	0/1	ok/alarm	2, (1)
2208	fire/smoke	火灾报警	0/1	ok/alarm	2, (1)
2216	return air temp. too high alarm	回风温度太高报警	0/1	ok/alarm	2, (1)
2221	return air temp. too low alarm	回风温度太低报警	0/1	ok/alarm	2, (1)
2217	return air humid. too high alarm	回风湿度太高报警	0/1	ok/alarm	2, (1)
2222	return air humid. too low alarm	回风湿度太低报警	0/1	ok/alarm	2, (1)
2218	supply air temp. too high alarm	送风温度太高报警	0/1	ok/alarm	2, (1)
2223	supply air temp. too low alarm	送风温度太低报警	0/1	ok/alarm	2, (1)
2219	supply air humid. too high alarm	送风湿度太高报警	0/1	ok/alarm	2, (1)
2224	supply air humid. too low alarm	送风湿度太低报警	0/1	ok/alarm	2, (1)
2346	unit setpoint temperature day	温度设定值 (白天)	5,0..50,0 °C	5,0..50,0 °C	3, (4)
2348	unit setpoint temperature night	温度设定值 (夜晚)	5,0..50,0 °C	5,0..50,0 °C	3, (4)
2352	unit setpoint humidity	湿度设定值	5,0..90,0 %	5,0..90,0 %	3, (4)
2384	unit return air temperature	回风温度	-100,0..100,0 °C	-100,0..100,0 °C	4, (3)
2388	unit return air humidity	回风湿度	0,0..100,0 %	0,0..100,0 %	4, (3)
2386	unit supply air temperature	送风温度	-100,0..100,0 °C	-100,0..100,0 °C	4, (3)
2390	unit supply air humidity	送风湿度	0,0..100,0 %	0,0..100,0 %	4, (3)
4403	compr. 1 running	压缩机 1 运行	0/1		2, (1)
4405	compr. 1 low press. Alarm	回路 1 低压报警	0/1	ok/alarm	2, (1)
4503	compr. 2 running	压缩机 2 运行	0/1		2, (1)
4505	compr. 2 low press. Alarm	回路 2 低压报警	0/1	ok/alarm	2, (1)
4802	elec.-heating1 alarm	电加热报警	0/1		2, (1)
4803	elec.-heating1 running	电加热 1 运行	0/1		2, (1)
4903	elec.-heating2 running	电加热 2 运行	0/1		2, (1)
5003	elec.-heating3 running	电加热 3 运行	0/1		2, (1)
6402	humidifier1 running	加湿器运行	0/1		2, (1)
6902	fan1 running	风机运行	0/1		2, (1)
6903	fan1 alarm	风机报警	0/1		2, (1)
6904	fan1 filter alarm	空气过滤网报警	0/1		2, (1)
8576	humidifier1 alarm	加湿器报警	0/1	ok/alarm	1, 2

ASD/U ***A 型机组

MODBU 地址	Description	中文描述	Modbus range	mapped meaning	Modbus function
1000	PC-STOP (monitoring), BMS stop 1	BMS 开机 (0), 关机 (1)	0/1	maybe on/unit off	1, (2), 5
1010	common alarm	公共报警	0/1	no alarm / alarm	2, (1)
1013	Unit on / off	机组开机/关机状态	0/1	off/on	2, (1)
1754	unit cooling	制冷模式	0/1	inactive/active	2, (1)
1755	unit heating	加热模式	0/1	inactive/active	2, (1)
1756	unit humidification	加湿模式	0/1	inactive/active	2, (1)
1757	unit dehumidification	除湿模式	0/1	inactive/active	2, (1)
2200	airflow 1	气流报警	0/1	ok/alarm	2, (1)
2203	highpressure 1	回路 1 高压报警	0/1	ok/alarm	2, (1)
2204	highpressure 2	回路 2 高压报警	0/1	ok/alarm	2, (1)
2206	water detector	漏水报警	0/1	ok/alarm	2, (1)
2208	fire/smoke	火灾报警	0/1	ok/alarm	2, (1)
2216	return air temp. too high alarm	回风温度太高报警	0/1	ok/alarm	2, (1)
2221	return air temp. too low alarm	回风温度太低报警	0/1	ok/alarm	2, (1)
2217	return air humid. too high alarm	回风湿度太高报警	0/1	ok/alarm	2, (1)
2222	return air humid. too low alarm	回风湿度太低报警	0/1	ok/alarm	2, (1)
2218	supply air temp. too high alarm	送风温度太高报警	0/1	ok/alarm	2, (1)
2223	supply air temp. too low alarm	送风温度太低报警	0/1	ok/alarm	2, (1)
2219	supply air humid. too high alarm	送风湿度太高报警	0/1	ok/alarm	2, (1)
2224	supply air humid. too low alarm	送风湿度太低报警	0/1	ok/alarm	2, (1)
2346	unit setpoint temperature day	温度设定值 (白天)	5,0..50,0 °C	5,0..50,0 °C	3, (4)
2348	unit setpoint temperature night	温度设定值 (夜晚)	5,0..50,0 °C	5,0..50,0 °C	3, (4)
2352	unit setpoint humidity	湿度设定值	5,0..90,0 %	5,0..90,0 %	3, (4)
2384	unit return air temperature	回风温度	-100,0..100,0 °C	-100,0..100,0 °C	4, (3)
2388	unit return air humidity	回风湿度	0,0..100,0 %	0,0..100,0 %	4, (3)
2386	unit supply air temperature	送风温度	-100,0..100,0 °C	-100,0..100,0 °C	4, (3)
2390	unit supply air humidity	送风湿度	0,0..100,0 %	0,0..100,0 %	4, (3)
4403	compr. 1 running	压缩机 1 运行	0/1		2, (1)
4405	compr. 1 low press. Alarm	回路 1 低压报警	0/1	ok/alarm	2, (1)
4503	compr. 2 running	压缩机 2 运行	0/1		2, (1)
4505	compr. 2 low press. Alarm	回路 2 低压报警	0/1	ok/alarm	2, (1)
4802	elec.-heating1 alarm	电加热报警	0/1		2, (1)
4803	elec.-heating1 running	电加热 1 运行	0/1		2, (1)
4903	elec.-heating2 running	电加热 2 运行	0/1		2, (1)
5003	elec.-heating3 running	电加热 3 运行	0/1		2, (1)
6402	humidifier1 running	加湿器运行	0/1		2, (1)
6902	fan1 running	风机运行	0/1		2, (1)
6903	fan1 alarm	风机报警	0/1		2, (1)
6904	fan1 filter alarm	空气过滤网报警	0/1		2, (1)
8576	humidifier1 alarm	加湿器报警	0/1	ok/alarm	1, 2
13864	fan1 speed	风机运转百分比	0..100	percent	3, (4)

ASD/U ***AS 型机组

MODBU 地址	Description	中文描述	Modbus range	mapped meaning	Modbus function
1000	PC-STOP (monitoring), BMS stop 1	BMS 开机 (0), 关机 (1)	0/1	maybe on/unit off	1, (2), 5
1010	common alarm	公共报警	0/1	no alarm / alarm	2, (1)
1013	Unit on / off	机组开机/关机状态	0/1	off/on	2, (1)
1754	unit cooling	制冷模式	0/1	inactive/active	2, (1)
1755	unit heating	加热模式	0/1	inactive/active	2, (1)
1756	unit humidification	加湿模式	0/1	inactive/active	2, (1)
1757	unit dehumidification	除湿模式	0/1	inactive/active	2, (1)
2200	airflow 1	气流报警	0/1	ok/alarm	2, (1)
2203	highpressure 1	回路 1 高压报警	0/1	ok/alarm	2, (1)
2204	highpressure 2	回路 2 高压报警	0/1	ok/alarm	2, (1)
2206	water detector	漏水报警	0/1	ok/alarm	2, (1)
2208	fire/smoke	火灾报警	0/1	ok/alarm	2, (1)
2216	return air temp. too high alarm	回风温度太高报警	0/1	ok/alarm	2, (1)
2221	return air temp. too low alarm	回风温度太低报警	0/1	ok/alarm	2, (1)
2217	return air humid. too high alarm	回风湿度太高报警	0/1	ok/alarm	2, (1)
2222	return air humid. too low alarm	回风湿度太低报警	0/1	ok/alarm	2, (1)
2218	supply air temp. too high alarm	送风温度太高报警	0/1	ok/alarm	2, (1)
2223	supply air temp. too low alarm	送风温度太低报警	0/1	ok/alarm	2, (1)
2219	supply air humid. too high alarm	送风湿度太高报警	0/1	ok/alarm	2, (1)
2224	supply air humid. too low alarm	送风湿度太低报警	0/1	ok/alarm	2, (1)
2346	unit setpoint temperature day	温度设定值 (白天)	5,0..50,0 °C	5,0..50,0 °C	3, (4)
2348	unit setpoint temperature night	温度设定值 (夜晚)	5,0..50,0 °C	5,0..50,0 °C	3, (4)
2352	unit setpoint humidity	湿度设定值	5,0..90,0 %	5,0..90,0 %	3, (4)
2384	unit return air temperature	回风温度	-100,0..100,0 °C	-100,0..100,0 °C	4, (3)
2388	unit return air humidity	回风湿度	0,0..100,0 %	0,0..100,0 %	4, (3)
2386	unit supply air temperature	送风温度	-100,0..100,0 °C	-100,0..100,0 °C	4, (3)
2390	unit supply air humidity	送风湿度	0,0..100,0 %	0,0..100,0 %	4, (3)
4403	compr. 1 running	压缩机 1 运行	0/1		2, (1)
4405	compr. 1 low press. Alarm	回路 1 低压报警	0/1	ok/alarm	2, (1)
4503	compr. 2 running	压缩机 2 运行	0/1		2, (1)
4505	compr. 2 low press. Alarm	回路 2 低压报警	0/1	ok/alarm	2, (1)
4802	elec.-heating1 alarm	电加热 1 报警	0/1		2, (1)
4803	elec.-heating1 running	电加热 1 运行	0/1		2, (1)
4903	elec.-heating2 running	电加热 2 运行	0/1		2, (1)
5003	elec.-heating3 running	电加热 3 运行	0/1		2, (1)
6402	humidifier1 running	加湿器运行	0/1		2, (1)
6902	fan1 running	风机运行	0/1		2, (1)
6903	fan1 alarm	风机报警	0/1		2, (1)
6904	fan1 filter alarm	空气过滤网报警	0/1		2, (1)
8576	humidifier1 alarm	加湿器报警	0/1	ok/alarm	1, 2
13864	fan1 speed	风机运转百分比	0..100	percent	3, (4)

ASD/U ***G 型机组

MODBU 地址	Description	中文描述	Modbus range	mapped meaning	Modbus function
1000	PC-STOP (monitoring), BMS stop 1	BMS 开机 (0), 关机 (1)	0/1	maybe on/unit off	1, (2), 5
1010	common alarm	公共报警	0/1	no alarm / alarm	2, (1)
1013	Unit on / off	机组开机/关机状态	0/1	off/on	2, (1)
1754	unit cooling	制冷模式	0/1	inactive/active	2, (1)
1755	unit heating	加热模式	0/1	inactive/active	2, (1)
1756	unit humidification	加湿模式	0/1	inactive/active	2, (1)
1757	unit dehumidification	除湿模式	0/1	inactive/active	2, (1)
2200	airflow 1	气流报警	0/1	ok/alarm	2, (1)
2203	highpressure 1	回路 1 高压报警	0/1	ok/alarm	2, (1)
2204	highpressure 2	回路 2 高压报警	0/1	ok/alarm	2, (1)
2206	water detector	漏水报警	0/1	ok/alarm	2, (1)
2208	fire/smoke	火灾报警	0/1	ok/alarm	2, (1)
2216	return air temp. too high alarm	回风温度太高报警	0/1	ok/alarm	2, (1)
2217	return air humid. too high alarm	回风湿度太高报警	0/1	ok/alarm	2, (1)
2218	supply air temp. too high alarm	送风温度太高报警	0/1	ok/alarm	2, (1)
2219	supply air humid. too high alarm	送风湿度太高报警	0/1	ok/alarm	2, (1)
2221	return air temp. too low alarm	回风温度太低报警	0/1	ok/alarm	2, (1)
2222	return air humid. too low alarm	回风湿度太低报警	0/1	ok/alarm	2, (1)
2223	supply air temp. too low alarm	送风温度太低报警	0/1	ok/alarm	2, (1)
2224	supply air humid. too low alarm	送风湿度太低报警	0/1	ok/alarm	2, (1)
2346	unit setpoint temperature day	温度设定值 (白天)	5,0..50,0 °C	5,0..50,0 °C	3, (4)
2348	unit setpoint temperature night	温度设定值 (夜晚)	5,0..50,0 °C	5,0..50,0 °C	3, (4)
2352	unit setpoint humidity	湿度设定值	5,0..90,0 %	5,0..90,0 %	3, (4)
2384	unit return air temperature	回风温度	-100,0..100,0 °C	-100,0..100,0 °C	4, (3)
2386	unit supply air temperature	送风温度	-100,0..100,0 °C	-100,0..100,0 °C	4, (3)
2388	unit return air humidity	回风湿度	0,0..100,0 %	0,0..100,0 %	4, (3)
2390	unit supply air humidity	送风湿度	0,0..100,0 %	0,0..100,0 %	4, (3)
4403	compr. 1 running	压缩机 1 运行	0/1		2, (1)
4405	compr. 1 low press. Alarm	回路 1 低压报警	0/1	ok/alarm	2, (1)
4503	compr. 2 running	压缩机 2 运行	0/1		2, (1)
4505	compr. 2 low press. Alarm	回路 2 低压报警	0/1	ok/alarm	2, (1)
4802	elec.-heating1 alarm	电加热报警	0/1		2, (1)
4803	elec.-heating1 running	电加热 1 运行	0/1		2, (1)
4903	elec.-heating2 running	电加热 2 运行	0/1		2, (1)
5003	elec.-heating3 running	电加热 3 运行	0/1		2, (1)
6402	humidifier1 running	加湿器运行	0/1		2, (1)
6902	fan1 running	风机运行	0/1		2, (1)
6903	fan1 alarm	风机报警	0/1		2, (1)
6904	fan1 filter alarm	空气过滤网报警	0/1		2, (1)
8568	drycooler1 alarm	干冷器 1 报警	0/1	ok/alarm	1, 2
8569	drycooler2 alarm	干冷器 2 报警	0/1	ok/alarm	1, 2

8570	drycooler3 alarm	干冷器 3 报警	0/1	ok/alarm	1, 2
8571	drycooler4 alarm	干冷器 4 报警	0/1	ok/alarm	1, 2
8574	pump3 alarm	水泵 3 报警	0/1	ok/alarm	1, 2
8575	pump4 alarm	水泵 4 报警	0/1	ok/alarm	1, 2
8576	humidifier1 alarm	加湿器报警	0/1	ok/alarm	1, 2
10624	G-valve 1 opening grade	G 阀 1 开度	0..100	percent	4, (3)
10724	G-valve 2 opening grade	G 阀 2 开度	0..100	percent	4, (3)
13864	fan1 speed	风机运转百分比	0..100	percent	3, (4)

ASD/U ***CW/CWU 型机组

MODBU 地址	Description	中文描述	Modbus range	mapped meaning	Modbus function
1000	PC-STOP (monitoring), BMS stop 1	BMS 开机 (0), 关机 (1)	0/1	maybe on/unit off	1, (2), 5
1010	common alarm	公共报警	0/1	no alarm / alarm	2, (1)
1013	Unit on / off	机组开机/关机状态	0/1	off/on	2, (1)
1754	unit cooling	制冷模式	0/1	inactive/active	2, (1)
1755	unit heating	加热模式	0/1	inactive/active	2, (1)
1756	unit humidification	加湿模式	0/1	inactive/active	2, (1)
1757	unit dehumidification	除湿模式	0/1	inactive/active	2, (1)
2200	airflow 1	气流报警	0/1	ok/alarm	2, (1)
2206	water detector	漏水报警	0/1	ok/alarm	2, (1)
2208	fire/smoke	火灾报警	0/1	ok/alarm	2, (1)
2216	return air temp. too high alarm	回风温度太高报警	0/1	ok/alarm	2, (1)
2217	return air humid. too high alarm	回风湿度太高报警	0/1	ok/alarm	2, (1)
2218	supply air temp. too high alarm	送风温度太高报警	0/1	ok/alarm	2, (1)
2219	supply air humid. too high alarm	送风湿度太高报警	0/1	ok/alarm	2, (1)
2220	water temp. too high alarm	水温温度太高报警	0/1	ok/alarm	2, (1)
2221	return air temp. too low alarm	回风温度太低报警	0/1	ok/alarm	2, (1)
2222	return air humid. too low alarm	回风湿度太低报警	0/1	ok/alarm	2, (1)
2223	supply air temp. too low alarm	送风温度太低报警	0/1	ok/alarm	2, (1)
2224	supply air humid. too low alarm	送风湿度太低报警	0/1	ok/alarm	2, (1)
2225	water temp. too low alarm	水温温度太低报警	0/1	ok/alarm	2, (1)
2346	unit setpoint temperature day	温度设定值 (白天)	5,0..50,0 °C	5,0..50,0 °C	3, (4)
2348	unit setpoint temperature night	温度设定值 (夜晚)	5,0..50,0 °C	5,0..50,0 °C	3, (4)
2352	unit setpoint humidity	湿度设定值	5,0..90,0 %	5,0..90,0 %	3, (4)
2382	water in temperature 1 (chillers: primary)	进水温度 1	-100,0..100,0 °C	-100,0..100,0 °C	4, (3)
2384	unit return air temperature	回风温度	-100,0..100,0 °C	-100,0..100,0 °C	4, (3)
2386	unit supply air temperature	送风温度	-100,0..100,0 °C	-100,0..100,0 °C	4, (3)
2388	unit return air humidity	回风湿度	0,0..100,0 %	0,0..100,0 %	4, (3)
2390	unit supply air humidity	送风湿度	0,0..100,0 %	0,0..100,0 %	4, (3)
2412	water out temperature 1 (chillers: primary)	出水温度 1	-100,0..100,0 °C	-100,0..100,0 °C	4, (3)
4802	elec.-heating1 alarm	电加热报警	0/1		2, (1)
4803	elec.-heating1 running	电加热 1 运行	0/1		2, (1)
4903	elec.-heating2 running	电加热 2 运行	0/1		2, (1)
5003	elec.-heating3 running	电加热 3 运行	0/1		2, (1)
6402	humidifier1 running	加湿器运行	0/1		2, (1)
6902	fan1 running	风机运行	0/1		2, (1)
6903	fan1 alarm	风机报警	0/1		2, (1)
6904	fan1 filter alarm	空气过滤网报警	0/1		2, (1)
8576	humidifier1 alarm	加湿器报警	0/1	ok/alarm	1, 2
10428	GE/CW-valve opening grade 1	CW1 阀开度	0..100	percent	4, (3)
13864	fan1 speed	风机运转百分比	0..100	percent	3, (4)

ASD/U ***CW2 型机组

MODBU 地址	Description	中文描述	Modbus range	mapped meaning	Modbus function
1000	PC-STOP (monitoring), BMS stop 1	BMS 开机 (0), 关机 (1)	0/1	maybe on/unit off	1, (2), 5
1010	common alarm	公共报警	0/1	no alarm / alarm	2, (1)
1013	Unit on / off	机组开机/关机状态	0/1	off/on	2, (1)
1754	unit cooling	制冷模式	0/1	inactive/active	2, (1)
1755	unit heating	加热模式	0/1	inactive/active	2, (1)
1756	unit humidification	加湿模式	0/1	inactive/active	2, (1)
1757	unit dehumidification	除湿模式	0/1	inactive/active	2, (1)
2200	airflow 1	气流报警	0/1	ok/alarm	2, (1)
2206	water detector	漏水报警	0/1	ok/alarm	2, (1)
2208	fire/smoke	火灾报警	0/1	ok/alarm	2, (1)
2216	return air temp. too high alarm	回风温度太高报警	0/1	ok/alarm	2, (1)
2217	return air humid. too high alarm	回风湿度太高报警	0/1	ok/alarm	2, (1)
2218	supply air temp. too high alarm	送风温度太高报警	0/1	ok/alarm	2, (1)
2219	supply air humid. too high alarm	送风湿度太高报警	0/1	ok/alarm	2, (1)
2220	water temp. too high alarm	水温温度太高报警	0/1	ok/alarm	2, (1)
2221	return air temp. too low alarm	回风温度太低报警	0/1	ok/alarm	2, (1)
2222	return air humid. too low alarm	回风湿度太低报警	0/1	ok/alarm	2, (1)
2223	supply air temp. too low alarm	送风温度太低报警	0/1	ok/alarm	2, (1)
2224	supply air humid. too low alarm	送风湿度太低报警	0/1	ok/alarm	2, (1)
2225	water temp. too low alarm	水温温度太低报警	0/1	ok/alarm	2, (1)
2346	unit setpoint temperature day	温度设定值 (白天)	5,0..50,0 °C	5,0..50,0 °C	3, (4)
2348	unit setpoint temperature night	温度设定值 (夜晚)	5,0..50,0 °C	5,0..50,0 °C	3, (4)
2352	unit setpoint humidity	湿度设定值	5,0..90,0 %	5,0..90,0 %	3, (4)
2382	water in temperature 1 (chillers: primary)	进水温度 1	-100,0..100,0 °C	-100,0..100,0 °C	4, (3)
2384	unit return air temperature	回风温度	-100,0..100,0 °C	-100,0..100,0 °C	4, (3)
2386	unit supply air temperature	送风温度	-100,0..100,0 °C	-100,0..100,0 °C	4, (3)
2388	unit return air humidity	回风湿度	0,0..100,0 %	0,0..100,0 %	4, (3)
2390	unit supply air humidity	送风湿度	0,0..100,0 %	0,0..100,0 %	4, (3)
2404	water in temperature 2 (chillers: secondary)	进水温度 2	-100,0..100,0 °C	-100,0..100,0 °C	4, (3)
2412	water out temperature 1 (chillers: primary)	出水温度 1	-100,0..100,0 °C	-100,0..100,0 °C	4, (3)
2414	water out temperature 2 (chillers: secondary)	出水温度 2	-100,0..100,0 °C	-100,0..100,0 °C	4, (3)
4802	elec.-heating1 alarm	电加热报警	0/1		2, (1)
4803	elec.-heating1 running	电加热 1 运行	0/1		2, (1)
4903	elec.-heating2 running	电加热 2 运行	0/1		2, (1)
5003	elec.-heating3 running	电加热 3 运行	0/1		2, (1)
6402	humidifier1 running	加湿器运行	0/1		2, (1)
6902	fan1 running	风机运行	0/1		2, (1)
6903	fan1 alarm	风机报警	0/1		2, (1)
6904	fan1 filter alarm	空气过滤网报警	0/1		2, (1)
8576	humidifier1 alarm	加湿器报警	0/1	ok/alarm	1, 2
10428	GE/CW-valve opening grade 1	CW1 阀开度	0..100	percent	4, (3)



10448	GE/CW-valve opening grade 2	CW2 阀开度	0..100	percent	3, (4)
13864	fan1 speed	风机运转百分比	0..100	percent	3, (4)

ASD/U ***ACW 型机组

MODBU 地址	Description	中文描述	Modbus range	mapped meaning	Modbus function
1000	PC-STOP (monitoring), BMS stop 1	BMS 开机 (0), 关机 (1)	0/1	maybe on/unit off	1, (2), 5
1010	common alarm	公共报警	0/1	no alarm / alarm	2, (1)
1013	Unit on / off	机组开机/关机状态	0/1	off/on	2, (1)
1754	unit cooling	制冷模式	0/1	inactive/active	2, (1)
1755	unit heating	加热模式	0/1	inactive/active	2, (1)
1756	unit humidification	加湿模式	0/1	inactive/active	2, (1)
1757	unit dehumidification	除湿模式	0/1	inactive/active	2, (1)
2200	airflow 1	气流报警	0/1	ok/alarm	2, (1)
2203	highpressure 1	回路 1 高压报警	0/1	ok/alarm	2, (1)
2204	highpressure 2	回路 2 高压报警	0/1	ok/alarm	2, (1)
2206	water detector	漏水报警	0/1	ok/alarm	2, (1)
2208	fire/smoke	火灾报警	0/1	ok/alarm	2, (1)
2216	return air temp. too high alarm	回风温度太高报警	0/1	ok/alarm	2, (1)
2217	return air humid. too high alarm	回风湿度太高报警	0/1	ok/alarm	2, (1)
2218	supply air temp. too high alarm	送风温度太高报警	0/1	ok/alarm	2, (1)
2219	supply air humid. too high alarm	送风湿度太高报警	0/1	ok/alarm	2, (1)
2220	water temp. too high alarm	水温温度太高报警	0/1	ok/alarm	2, (1)
2221	return air temp. too low alarm	回风温度太低报警	0/1	ok/alarm	2, (1)
2222	return air humid. too low alarm	回风湿度太低报警	0/1	ok/alarm	2, (1)
2223	supply air temp. too low alarm	送风温度太低报警	0/1	ok/alarm	2, (1)
2224	supply air humid. too low alarm	送风湿度太低报警	0/1	ok/alarm	2, (1)
2225	water temp. too low alarm	水温温度太低报警	0/1	ok/alarm	2, (1)
2346	unit setpoint temperature day	温度设定值 (白天)	5,0..50,0 °C	5,0..50,0 °C	3, (4)
2348	unit setpoint temperature night	温度设定值 (夜晚)	5,0..50,0 °C	5,0..50,0 °C	3, (4)
2352	unit setpoint humidity	湿度设定值	5,0..90,0 %	5,0..90,0 %	3, (4)
2382	water in temperature 1 (chillers: primary)	进水温度 1	-100,0..100,0 °C	-100,0..100,0 °C	4, (3)
2384	unit return air temperature	回风温度	-100,0..100,0 °C	-100,0..100,0 °C	4, (3)
2386	unit supply air temperature	送风温度	-100,0..100,0 °C	-100,0..100,0 °C	4, (3)
2388	unit return air humidity	回风湿度	0,0..100,0 %	0,0..100,0 %	4, (3)
2390	unit supply air humidity	送风湿度	0,0..100,0 %	0,0..100,0 %	4, (3)
2412	water out temperature 1 (chillers: primary)	出水温度 1	-100,0..100,0 °C	-100,0..100,0 °C	4, (3)
4403	compr. 1 running	压缩机 1 运行	0/1		2, (1)
4405	compr. 1 low press. Alarm	回路 1 低压报警	0/1	ok/alarm	2, (1)
4503	compr. 2 running	压缩机 2 运行	0/1		2, (1)
4505	compr. 2 low press. Alarm	回路 2 低压报警	0/1	ok/alarm	2, (1)
4802	elec.-heating1 alarm	电加热报警	0/1		2, (1)
4803	elec.-heating1 running	电加热 1 运行	0/1		2, (1)
4903	elec.-heating2 running	电加热 2 运行	0/1		2, (1)
5003	elec.-heating3 running	电加热 3 运行	0/1		2, (1)
6402	humidifier1 running	加湿器运行	0/1		2, (1)
6902	fan1 running	风机运行	0/1		2, (1)

6903	fan1 alarm	风机报警	0/1		2, (1)
6904	fan1 filter alarm	空气过滤网报警	0/1		2, (1)
8576	humidifier1 alarm	加湿器报警	0/1	ok/alarm	1, 2
10428	GE/CW-valve opening grade 1	CW1 阀开度	0..100	percent	4, (3)
13864	fan1 speed	风机运转百分比	0..100	percent	3, (4)

ASD/U ***GCW 型机组

MODBU 地址	Description	中文描述	Modbus range	mapped meaning	Modbus function
1000	PC-STOP (monitoring), BMS stop 1	BMS 开机 (0), 关机 (1)	0/1	maybe on/unit off	1, (2), 5
1010	common alarm	公共报警	0/1	no alarm / alarm	2, (1)
1013	Unit on / off	机组开机/关机状态	0/1	off/on	2, (1)
1754	unit cooling	制冷模式	0/1	inactive/active	2, (1)
1755	unit heating	加热模式	0/1	inactive/active	2, (1)
1756	unit humidification	加湿模式	0/1	inactive/active	2, (1)
1757	unit dehumidification	除湿模式	0/1	inactive/active	2, (1)
2200	airflow 1	气流报警	0/1	ok/alarm	2, (1)
2203	highpressure 1	回路 1 高压报警	0/1	ok/alarm	2, (1)
2204	highpressure 2	回路 2 高压报警	0/1	ok/alarm	2, (1)
2206	water detector	漏水报警	0/1	ok/alarm	2, (1)
2208	fire/smoke	火灾报警	0/1	ok/alarm	2, (1)
2216	return air temp. too high alarm	回风温度太高报警	0/1	ok/alarm	2, (1)
2217	return air humid. too high alarm	回风湿度太高报警	0/1	ok/alarm	2, (1)
2218	supply air temp. too high alarm	送风温度太高报警	0/1	ok/alarm	2, (1)
2219	supply air humid. too high alarm	送风湿度太高报警	0/1	ok/alarm	2, (1)
2220	water temp. too high alarm	水温温度太高报警	0/1	ok/alarm	2, (1)
2221	return air temp. too low alarm	回风温度太低报警	0/1	ok/alarm	2, (1)
2222	return air humid. too low alarm	回风湿度太低报警	0/1	ok/alarm	2, (1)
2223	supply air temp. too low alarm	送风温度太低报警	0/1	ok/alarm	2, (1)
2224	supply air humid. too low alarm	送风湿度太低报警	0/1	ok/alarm	2, (1)
2225	water temp. too low alarm	水温温度太低报警	0/1	ok/alarm	2, (1)
2346	unit setpoint temperature day	温度设定值 (白天)	5,0..50,0 °C	5,0..50,0 °C	3, (4)
2348	unit setpoint temperature night	温度设定值 (夜晚)	5,0..50,0 °C	5,0..50,0 °C	3, (4)
2352	unit setpoint humidity	湿度设定值	5,0..90,0 %	5,0..90,0 %	3, (4)
2382	water in temperature 1 (chillers: primary)	进水温度 1	-100,0..100,0 °C	-100,0..100,0 °C	4, (3)
2384	unit return air temperature	回风温度	-100,0..100,0 °C	-100,0..100,0 °C	4, (3)
2386	unit supply air temperature	送风温度	-100,0..100,0 °C	-100,0..100,0 °C	4, (3)
2388	unit return air humidity	回风湿度	0,0..100,0 %	0,0..100,0 %	4, (3)
2390	unit supply air humidity	送风湿度	0,0..100,0 %	0,0..100,0 %	4, (3)
2392	unit outside air temperature	室外环境温度	-100,0..100,0 °C	-100,0..100,0 °C	4, (3)
2412	water out temperature 1 (chillers: primary)	出水温度 1	-100,0..100,0 °C	-100,0..100,0 °C	4, (3)
4403	compr. 1 running	压缩机 1 运行	0/1		2, (1)
4405	compr. 1 low press. Alarm	回路 1 低压报警	0/1	ok/alarm	2, (1)
4503	compr. 2 running	压缩机 2 运行	0/1		2, (1)
4505	compr. 2 low press. Alarm	回路 2 低压报警	0/1	ok/alarm	2, (1)
4802	elec.-heating1 alarm	电加热报警	0/1		2, (1)
4803	elec.-heating1 running	电加热 1 运行	0/1		2, (1)
4903	elec.-heating2 running	电加热 2 运行	0/1		2, (1)
5003	elec.-heating3 running	电加热 3 运行	0/1		2, (1)
6402	humidifier1 running	加湿器运行	0/1		2, (1)

6902	fan1 running	风机运行	0/1		2, (1)
6903	fan1 alarm	风机报警	0/1		2, (1)
6904	fan1 filter alarm	空气过滤网报警	0/1		2, (1)
8568	drycooler1 alarm	干冷器 1 报警	0/1	ok/alarm	1, 2
8569	drycooler2 alarm	干冷器 2 报警	0/1	ok/alarm	1, 2
8570	drycooler3 alarm	干冷器 3 报警	0/1	ok/alarm	1, 2
8571	drycooler4 alarm	干冷器 4 报警	0/1	ok/alarm	1, 2
8574	pump3 alarm	水泵 3 报警	0/1	ok/alarm	1, 2
8575	pump4 alarm	水泵 4 报警	0/1	ok/alarm	1, 2
8576	humidifier1 alarm	加湿器报警	0/1	ok/alarm	1, 2
10428	GE/CW-valve opening grade 1	CW 阀开度	0..100	percent	4, (3)
10624	G-valve 1 opening grade	G 阀开度	0..100	percent	4, (3)
13864	fan1 speed	风机运转百分比	0..100	percent	3, (4)

ASD/U ***GE 和 ALD/U ***GE 型机组

MODBU 地址	Description	中文描述	Modbus range	mapped meaning	Modbus function
1000	PC-STOP (monitoring), BMS stop 1	BMS 开机 (0), 关机 (1)	0/1	maybe on/unit off	1, (2), 5
1010	common alarm	公共报警	0/1	no alarm / alarm	2, (1)
1013	Unit on / off	机组开机/关机状态	0/1	off/on	2, (1)
1754	unit cooling	制冷模式	0/1	inactive/active	2, (1)
1755	unit heating	加热模式	0/1	inactive/active	2, (1)
1756	unit humidification	加湿模式	0/1	inactive/active	2, (1)
1757	unit dehumidification	除湿模式	0/1	inactive/active	2, (1)
2200	airflow 1	气流报警	0/1	ok/alarm	2, (1)
2203	highpressure 1	回路 1 高压报警	0/1	ok/alarm	2, (1)
2204	highpressure 2	回路 2 高压报警	0/1	ok/alarm	2, (1)
2206	water detector	漏水报警	0/1	ok/alarm	2, (1)
2208	fire/smoke	火灾报警	0/1	ok/alarm	2, (1)
2216	return air temp. too high alarm	回风温度太高报警	0/1	ok/alarm	2, (1)
2217	return air humid. too high alarm	回风湿度太高报警	0/1	ok/alarm	2, (1)
2218	supply air temp. too high alarm	送风温度太高报警	0/1	ok/alarm	2, (1)
2219	supply air humid. too high alarm	送风湿度太高报警	0/1	ok/alarm	2, (1)
2220	water temp. too high alarm	水温温度太高报警	0/1	ok/alarm	2, (1)
2221	return air temp. too low alarm	回风温度太低报警	0/1	ok/alarm	2, (1)
2222	return air humid. too low alarm	回风湿度太低报警	0/1	ok/alarm	2, (1)
2223	supply air temp. too low alarm	送风温度太低报警	0/1	ok/alarm	2, (1)
2224	supply air humid. too low alarm	送风湿度太低报警	0/1	ok/alarm	2, (1)
2225	water temp. too low alarm	水温温度太低报警	0/1	ok/alarm	2, (1)
2346	unit setpoint temperature day	温度设定值 (白天)	5,0..50,0 °C	5,0..50,0 °C	3, (4)
2348	unit setpoint temperature night	温度设定值 (夜晚)	5,0..50,0 °C	5,0..50,0 °C	3, (4)
2352	unit setpoint humidity	湿度设定值	5,0..90,0 %	5,0..90,0 %	3, (4)
2382	water in temperature 1 (chillers: primary)	进水温度 1	-100,0..100,0 °C	-100,0..100,0 °C	4, (3)
2384	unit return air temperature	回风温度	-100,0..100,0 °C	-100,0..100,0 °C	4, (3)
2386	unit supply air temperature	送风温度	-100,0..100,0 °C	-100,0..100,0 °C	4, (3)
2388	unit return air humidity	回风湿度	0,0..100,0 %	0,0..100,0 %	4, (3)
2390	unit supply air humidity	送风湿度	0,0..100,0 %	0,0..100,0 %	4, (3)
2392	unit outside air temperature	室外环境温度	-100,0..100,0 °C	-100,0..100,0 °C	4, (3)
2412	water out temperature 1 (chillers: primary)	出水温度 1	-100,0..100,0 °C	-100,0..100,0 °C	4, (3)
4403	compr. 1 running	压缩机 1 运行	0/1		2, (1)
4405	compr. 1 low press. Alarm	回路 1 低压报警	0/1	ok/alarm	2, (1)
4503	compr. 2 running	压缩机 2 运行	0/1		2, (1)
4505	compr. 2 low press. Alarm	回路 2 低压报警	0/1	ok/alarm	2, (1)
4802	elec.-heating1 alarm	电加热报警	0/1		2, (1)
4803	elec.-heating1 running	电加热 1 运行	0/1		2, (1)
4903	elec.-heating2 running	电加热 2 运行	0/1		2, (1)
5003	elec.-heating3 running	电加热 3 运行	0/1		2, (1)
6402	humidifier1 running	加湿器运行	0/1		2, (1)

6902	fan1 running	风机运行	0/1		2, (1)
6903	fan1 alarm	风机报警	0/1		2, (1)
6904	fan1 filter alarm	空气过滤网报警	0/1		2, (1)
8568	drycooler1 alarm	干冷器 1 报警	0/1	ok/alarm	1, 2
8569	drycooler2 alarm	干冷器 2 报警	0/1	ok/alarm	1, 2
8570	drycooler3 alarm	干冷器 3 报警	0/1	ok/alarm	1, 2
8571	drycooler4 alarm	干冷器 4 报警	0/1	ok/alarm	1, 2
8574	pump3 alarm	水泵 3 报警	0/1	ok/alarm	1, 2
8575	pump4 alarm	水泵 4 报警	0/1	ok/alarm	1, 2
8576	humidifier1 alarm	加湿器报警	0/1	ok/alarm	1, 2
10428	GE/CW-valve opening grade 1	GE 阀开度	0..100	percent	4, (3)
10624	G-valve 1 opening grade	G 阀 1 开度	0..100	percent	4, (3)
10724	G-valve 2 opening grade	G 阀 2 开度	0..100	percent	4, (3)
13864	fan1 speed	风机运转百分比	0..100	percent	3, (4)

ASD/U ***GES 和 ALD/U ***GES 型机组

MODBU 地址	Description	中文描述	Modbus range	mapped meaning	Modbus function
1000	PC-STOP (monitoring), BMS stop 1	BMS 开机 (0), 关机 (1)	0/1	maybe on/unit off	1, (2), 5
1010	common alarm	公共报警	0/1	no alarm / alarm	2, (1)
1013	Unit on / off	机组开机/关机状态	0/1	off/on	2, (1)
1754	unit cooling	制冷模式	0/1	inactive/active	2, (1)
1755	unit heating	加热模式	0/1	inactive/active	2, (1)
1756	unit humidification	加湿模式	0/1	inactive/active	2, (1)
1757	unit dehumidification	除湿模式	0/1	inactive/active	2, (1)
2200	airflow 1	气流报警	0/1	ok/alarm	2, (1)
2203	highpressure 1	回路 1 高压报警	0/1	ok/alarm	2, (1)
2204	highpressure 2	回路 2 高压报警	0/1	ok/alarm	2, (1)
2206	water detector	漏水报警	0/1	ok/alarm	2, (1)
2208	fire/smoke	火灾报警	0/1	ok/alarm	2, (1)
2216	return air temp. too high alarm	回风温度太高报警	0/1	ok/alarm	2, (1)
2217	return air humid. too high alarm	回风湿度太高报警	0/1	ok/alarm	2, (1)
2218	supply air temp. too high alarm	送风温度太高报警	0/1	ok/alarm	2, (1)
2219	supply air humid. too high alarm	送风湿度太高报警	0/1	ok/alarm	2, (1)
2220	water temp. too high alarm	水温温度太高报警	0/1	ok/alarm	2, (1)
2221	return air temp. too low alarm	回风温度太低报警	0/1	ok/alarm	2, (1)
2222	return air humid. too low alarm	回风湿度太低报警	0/1	ok/alarm	2, (1)
2223	supply air temp. too low alarm	送风温度太低报警	0/1	ok/alarm	2, (1)
2224	supply air humid. too low alarm	送风湿度太低报警	0/1	ok/alarm	2, (1)
2225	water temp. too low alarm	水温温度太低报警	0/1	ok/alarm	2, (1)
2346	unit setpoint temperature day	温度设定值 (白天)	5,0..50,0 °C	5,0..50,0 °C	3, (4)
2348	unit setpoint temperature night	温度设定值 (夜晚)	5,0..50,0 °C	5,0..50,0 °C	3, (4)
2352	unit setpoint humidity	湿度设定值	5,0..90,0 %	5,0..90,0 %	3, (4)
2382	water in temperature 1 (chillers: primary)	进水温度 1	-100,0..100,0 °C	-100,0..100,0 °C	4, (3)
2384	unit return air temperature	回风温度	-100,0..100,0 °C	-100,0..100,0 °C	4, (3)
2386	unit supply air temperature	送风温度	-100,0..100,0 °C	-100,0..100,0 °C	4, (3)
2388	unit return air humidity	回风湿度	0,0..100,0 %	0,0..100,0 %	4, (3)
2390	unit supply air humidity	送风湿度	0,0..100,0 %	0,0..100,0 %	4, (3)
2392	unit outside air temperature	室外环境温度	-100,0..100,0 °C	-100,0..100,0 °C	4, (3)
2404	water in temperature 2 (chillers: secondary)	进水温度 2	-100,0..100,0 °C	-100,0..100,0 °C	4, (3)
2412	water out temperature 1 (chillers: primary)	出水温度 1	-100,0..100,0 °C	-100,0..100,0 °C	4, (3)
2414	water out temperature 2 (chillers: secondary)	出水温度 2	-100,0..100,0 °C	-100,0..100,0 °C	4, (3)
4403	compr. 1 running	压缩机 1 运行	0/1		2, (1)
4405	compr. 1 low press. Alarm	回路 1 低压报警	0/1	ok/alarm	2, (1)
4503	compr. 2 running	压缩机 2 运行	0/1		2, (1)
4505	compr. 2 low press. Alarm	回路 2 低压报警	0/1	ok/alarm	2, (1)
4802	elec.-heating1 alarm	电加热报警	0/1		2, (1)
4803	elec.-heating1 running	电加热 1 运行	0/1		2, (1)
4903	elec.-heating2 running	电加热 2 运行	0/1		2, (1)

5003	elec.-heating3 running	电加热 3 运行	0/1		2, (1)
6402	humidifier1 running	加湿器运行	0/1		2, (1)
6902	fan1 running	风机运行	0/1		2, (1)
6903	fan1 alarm	风机报警	0/1		2, (1)
6904	fan1 filter alarm	空气过滤网报警	0/1		2, (1)
8568	drycooler1 alarm	干冷器 1 报警	0/1	ok/alarm	1, 2
8569	drycooler2 alarm	干冷器 2 报警	0/1	ok/alarm	1, 2
8570	drycooler3 alarm	干冷器 3 报警	0/1	ok/alarm	1, 2
8571	drycooler4 alarm	干冷器 4 报警	0/1	ok/alarm	1, 2
8574	pump3 alarm	水泵 3 报警	0/1	ok/alarm	1, 2
8575	pump4 alarm	水泵 4 报警	0/1	ok/alarm	1, 2
8576	humidifier1 alarm	加湿器报警	0/1	ok/alarm	1, 2
10428	GE/CW-valve opening grade 1	GE 阀开度	0..100	percent	4, (3)
10624	G-valve 1 opening grade	G 阀 1 开度	0..100	percent	4, (3)
10724	G-valve 2 opening grade	G 阀 2 开度	0..100	percent	4, (3)
13864	fan1 speed	风机运转百分比	0..100	percent	3, (4)

CRS ***A 型机组

MODBU 地址	Description	中文描述	Modbus range	mapped meaning	Modbus function
1000	PC-STOP (monitoring), BMS stop 1	BMS 开机 (0), 关机 (1)	0/1	maybe on/unit off	1, (2), 5
1010	common alarm	公共报警	0/1	no alarm / alarm	2, (1)
1013	Unit on / off	机组开机/关机状态	0/1	off/on	2, (1)
1754	unit cooling	制冷模式	0/1	inactive/active	2, (1)
1755	unit heating	加热模式	0/1	inactive/active	2, (1)
1756	unit humidification	加湿模式	0/1	inactive/active	2, (1)
1757	unit dehumidification	除湿模式	0/1	inactive/active	2, (1)
2200	airflow 1	气流报警	0/1	ok/alarm	2, (1)
2203	highpressure 1	高压报警	0/1	ok/alarm	2, (1)
2206	water detector	漏水报警	0/1	ok/alarm	2, (1)
2208	fire/smoke	火灾报警	0/1	ok/alarm	2, (1)
2216	return air temp. too high alarm	回风温度太高报警	0/1	ok/alarm	2, (1)
2217	return air humid. too high alarm	回风湿度太高报警	0/1	ok/alarm	2, (1)
2218	supply air temp. too high alarm	送风温度太高报警	0/1	ok/alarm	2, (1)
2219	supply air humid. too high alarm	送风湿度太高报警	0/1	ok/alarm	2, (1)
2221	return air temp. too low alarm	回风温度太低报警	0/1	ok/alarm	2, (1)
2222	return air humid. too low alarm	回风湿度太低报警	0/1	ok/alarm	2, (1)
2223	supply air temp. too low alarm	送风温度太低报警	0/1	ok/alarm	2, (1)
2224	supply air humid. too low alarm	送风湿度太低报警	0/1	ok/alarm	2, (1)
2346	unit setpoint temperature day	温度设定值 (白天)	5,0..50,0 °C	5,0..50,0 °C	3, (4)
2348	unit setpoint temperature night	温度设定值 (夜晚)	5,0..50,0 °C	5,0..50,0 °C	3, (4)
2352	unit setpoint humidity	湿度设定值	5,0..90,0 %	5,0..90,0 %	3, (4)
2384	unit return air temperature	回风温度	-100,0..100,0 °C	-100,0..100,0 °C	4, (3)
2386	unit supply air temperature	送风温度	-100,0..100,0 °C	-100,0..100,0 °C	4, (3)
2388	unit return air humidity	回风湿度	0,0..100,0 %	0,0..100,0 %	4, (3)
2390	unit supply air humidity	送风湿度	0,0..100,0 %	0,0..100,0 %	4, (3)
2486	unit supply air temperature 3	送风温度 3	-100,0..100,0 °C	-100,0..100,0 °C	4, (3)
2488	unit return air temperature 2	回风温度 2	-100,0..100,0 °C	-100,0..100,0 °C	4, (3)
2490	unit return air temperature 3	回风温度 3	-100,0..100,0 °C	-100,0..100,0 °C	4, (3)
2492	unit return air temperature 1	回风温度 1	-100,0..100,0 °C	-100,0..100,0 °C	4, (3)
2494	unit supply air temperature 1	送风温度 1	-100,0..100,0 °C	-100,0..100,0 °C	4, (3)
2496	unit supply air temperature 2	送风温度 2	-100,0..100,0 °C	-100,0..100,0 °C	4, (3)
4403	compr. 1 running	压缩机运行	0/1		2, (1)
4405	compr. 1 low press. Alarm	低压报警	0/1	ok/alarm	2, (1)
4802	elec.-heating1 alarm	电加热报警	0/1		2, (1)
4803	elec.-heating1 running	电加热 1 运行	0/1		2, (1)
4903	elec.-heating2 running	电加热 2 运行	0/1		2, (1)
5003	elec.-heating3 running	电加热 3 运行	0/1		2, (1)
6402	humidifier1 running	加湿器运行	0/1		2, (1)
6902	fan1 running	风机 1 运行	0/1		2, (1)
6903	fan1 alarm	风机 1 报警	0/1		2, (1)

6904	fan1 filter alarm	空气过滤网报警	0/1		2, (1)
7002	fan2 running	风机 2 运行	0/1		2, (1)
7003	fan2 alarm	风机 2 报警	0/1		2, (1)
7102	fan3 running	风机 3 运行	0/1		2, (1)
7103	fan3 alarm	风机 3 报警	0/1		2, (1)
8576	humidifier1 alarm	加湿器报警	0/1	ok/alarm	1, 2
13864	fan1 speed	风机 1 运转百分比	0..100	percent	3, (4)
14064	fan2 speed	风机 2 运转百分比	0..100	percent	3, (4)
14264	fan3 speed	风机 3 运转百分比	0..100	percent	3, (4)

CRS ***AS 型机组

MODBU 地址	Description	中文描述	Modbus range	mapped meaning	Modbus function
1000	PC-STOP (monitoring), BMS stop 1	BMS 开机 (0), 关机 (1)	0/1	maybe on/unit off	1, (2), 5
1010	common alarm	公共报警	0/1	no alarm / alarm	2, (1)
1013	Unit on / off	机组开机/关机状态	0/1	off/on	2, (1)
1754	unit cooling	制冷模式	0/1	inactive/active	2, (1)
1755	unit heating	加热模式	0/1	inactive/active	2, (1)
1756	unit humidification	加湿模式	0/1	inactive/active	2, (1)
1757	unit dehumidification	除湿模式	0/1	inactive/active	2, (1)
2200	airflow 1	气流报警	0/1	ok/alarm	2, (1)
2203	highpressure 1	高压报警	0/1	ok/alarm	2, (1)
2206	water detector	漏水报警	0/1	ok/alarm	2, (1)
2208	fire/smoke	火灾报警	0/1	ok/alarm	2, (1)
2216	return air temp. too high alarm	回风温度太高报警	0/1	ok/alarm	2, (1)
2217	return air humid. too high alarm	回风湿度太高报警	0/1	ok/alarm	2, (1)
2218	supply air temp. too high alarm	送风温度太高报警	0/1	ok/alarm	2, (1)
2219	supply air humid. too high alarm	送风湿度太高报警	0/1	ok/alarm	2, (1)
2221	return air temp. too low alarm	回风温度太低报警	0/1	ok/alarm	2, (1)
2222	return air humid. too low alarm	回风湿度太低报警	0/1	ok/alarm	2, (1)
2223	supply air temp. too low alarm	送风温度太低报警	0/1	ok/alarm	2, (1)
2224	supply air humid. too low alarm	送风湿度太低报警	0/1	ok/alarm	2, (1)
2346	unit setpoint temperature day	温度设定值 (白天)	5,0..50,0 °C	5,0..50,0 °C	3, (4)
2348	unit setpoint temperature night	温度设定值 (夜晚)	5,0..50,0 °C	5,0..50,0 °C	3, (4)
2352	unit setpoint humidity	湿度设定值	5,0..90,0 %	5,0..90,0 %	3, (4)
2384	unit return air temperature	回风温度	-100,0..100,0 °C	-100,0..100,0 °C	4, (3)
2386	unit supply air temperature	送风温度	-100,0..100,0 °C	-100,0..100,0 °C	4, (3)
2388	unit return air humidity	回风湿度	0,0..100,0 %	0,0..100,0 %	4, (3)
2390	unit supply air humidity	送风湿度	0,0..100,0 %	0,0..100,0 %	4, (3)
2486	unit supply air temperature 3	送风温度 3	-100,0..100,0 °C	-100,0..100,0 °C	4, (3)
2488	unit return air temperature 2	回风温度 2	-100,0..100,0 °C	-100,0..100,0 °C	4, (3)
2490	unit return air temperature 3	回风温度 3	-100,0..100,0 °C	-100,0..100,0 °C	4, (3)
2492	unit return air temperature 1	回风温度 1	-100,0..100,0 °C	-100,0..100,0 °C	4, (3)
2494	unit supply air temperature 1	送风温度 1	-100,0..100,0 °C	-100,0..100,0 °C	4, (3)
2496	unit supply air temperature 2	送风温度 2	-100,0..100,0 °C	-100,0..100,0 °C	4, (3)
4403	compr. 1 running	压缩机运行	0/1		2, (1)
4405	compr. 1 low press. Alarm	低压报警	0/1	ok/alarm	2, (1)
4802	elec.-heating1 alarm	电加热报警	0/1		2, (1)
4803	elec.-heating1 running	电加热 1 运行	0/1		2, (1)
4903	elec.-heating2 running	电加热 2 运行	0/1		2, (1)
5003	elec.-heating3 running	电加热 3 运行	0/1		2, (1)
6402	humidifier1 running	加湿器运行	0/1		2, (1)
6902	fan1 running	风机 1 运行	0/1		2, (1)
6903	fan1 alarm	风机 1 报警	0/1		2, (1)

6904	fan1 filter alarm	空气过滤网报警	0/1		2, (1)
7002	fan2 running	风机 2 运行	0/1		2, (1)
7003	fan2 alarm	风机 2 报警	0/1		2, (1)
7102	fan3 running	风机 3 运行	0/1		2, (1)
7103	fan3 alarm	风机 3 报警	0/1		2, (1)
8576	humidifier1 alarm	加湿器报警	0/1	ok/alarm	1, 2
13864	fan1 speed	风机 1 运转百分比	0..100	percent	3, (4)
14064	fan2 speed	风机 2 运转百分比	0..100	percent	3, (4)
14264	fan3 speed	风机 3 运转百分比	0..100	percent	3, (4)

CRS ***CW 型机组

MODBU 地址	Description	中文描述	Modbus range	mapped meaning	Modbus function
1000	PC-STOP (monitoring), BMS stop 1	BMS 开机 (0), 关机 (1)	0/1	maybe on/unit off	1, (2), 5
1010	common alarm	公共报警	0/1	no alarm / alarm	2, (1)
1013	Unit on / off	机组开机/关机状态	0/1	off/on	2, (1)
1754	unit cooling	制冷模式	0/1	inactive/active	2, (1)
1755	unit heating	加热模式	0/1	inactive/active	2, (1)
1756	unit humidification	加湿模式	0/1	inactive/active	2, (1)
1757	unit dehumidification	除湿模式	0/1	inactive/active	2, (1)
2200	airflow 1	气流报警	0/1	ok/alarm	2, (1)
2206	water detector	漏水报警	0/1	ok/alarm	2, (1)
2208	fire/smoke	火灾报警	0/1	ok/alarm	2, (1)
2216	return air temp. too high alarm	回风温度太高报警	0/1	ok/alarm	2, (1)
2217	return air humid. too high alarm	回风湿度太高报警	0/1	ok/alarm	2, (1)
2218	supply air temp. too high alarm	送风温度太高报警	0/1	ok/alarm	2, (1)
2219	supply air humid. too high alarm	送风湿度太高报警	0/1	ok/alarm	2, (1)
2220	water temp. too high alarm	水温温度太高报警	0/1	ok/alarm	2, (1)
2221	return air temp. too low alarm	回风温度太低报警	0/1	ok/alarm	2, (1)
2222	return air humid. too low alarm	回风湿度太低报警	0/1	ok/alarm	2, (1)
2223	supply air temp. too low alarm	送风温度太低报警	0/1	ok/alarm	2, (1)
2224	supply air humid. too low alarm	送风湿度太低报警	0/1	ok/alarm	2, (1)
2225	water temp. too low alarm	水温温度太低报警	0/1	ok/alarm	2, (1)
2346	unit setpoint temperature day	温度设定值 (白天)	5,0..50,0 °C	5,0..50,0 °C	3, (4)
2348	unit setpoint temperature night	温度设定值 (夜晚)	5,0..50,0 °C	5,0..50,0 °C	3, (4)
2352	unit setpoint humidity	湿度设定值	5,0..90,0 %	5,0..90,0 %	3, (4)
2382	water in temperature 1 (chillers: primary)	进水温度 1	-100,0..100,0 °C	-100,0..100,0 °C	4, (3)
2384	unit return air temperature	回风温度	-100,0..100,0 °C	-100,0..100,0 °C	4, (3)
2386	unit supply air temperature	送风温度	-100,0..100,0 °C	-100,0..100,0 °C	4, (3)
2388	unit return air humidity	回风湿度	0,0..100,0 %	0,0..100,0 %	4, (3)
2390	unit supply air humidity	送风湿度	0,0..100,0 %	0,0..100,0 %	4, (3)
2412	water out temperature 1 (chillers: primary)	出水温度 1	-100,0..100,0 °C	-100,0..100,0 °C	4, (3)
2486	unit supply air temperature 3	送风温度 3	-100,0..100,0 °C	-100,0..100,0 °C	4, (3)
2488	unit return air temperature 2	回风温度 2	-100,0..100,0 °C	-100,0..100,0 °C	4, (3)
2490	unit return air temperature 3	回风温度 3	-100,0..100,0 °C	-100,0..100,0 °C	4, (3)
2492	unit return air temperature 1	回风温度 1	-100,0..100,0 °C	-100,0..100,0 °C	4, (3)
2494	unit supply air temperature 1	送风温度 1	-100,0..100,0 °C	-100,0..100,0 °C	4, (3)
2496	unit supply air temperature 2	送风温度 2	-100,0..100,0 °C	-100,0..100,0 °C	4, (3)
4802	elec.-heating1 alarm	电加热报警	0/1		2, (1)
4803	elec.-heating1 running	电加热 1 运行	0/1		2, (1)
4903	elec.-heating2 running	电加热 2 运行	0/1		2, (1)
5003	elec.-heating3 running	电加热 3 运行	0/1		2, (1)
6402	humidifier1 running	加湿器运行	0/1		2, (1)
6902	fan1 running	风机 1 运行	0/1		2, (1)

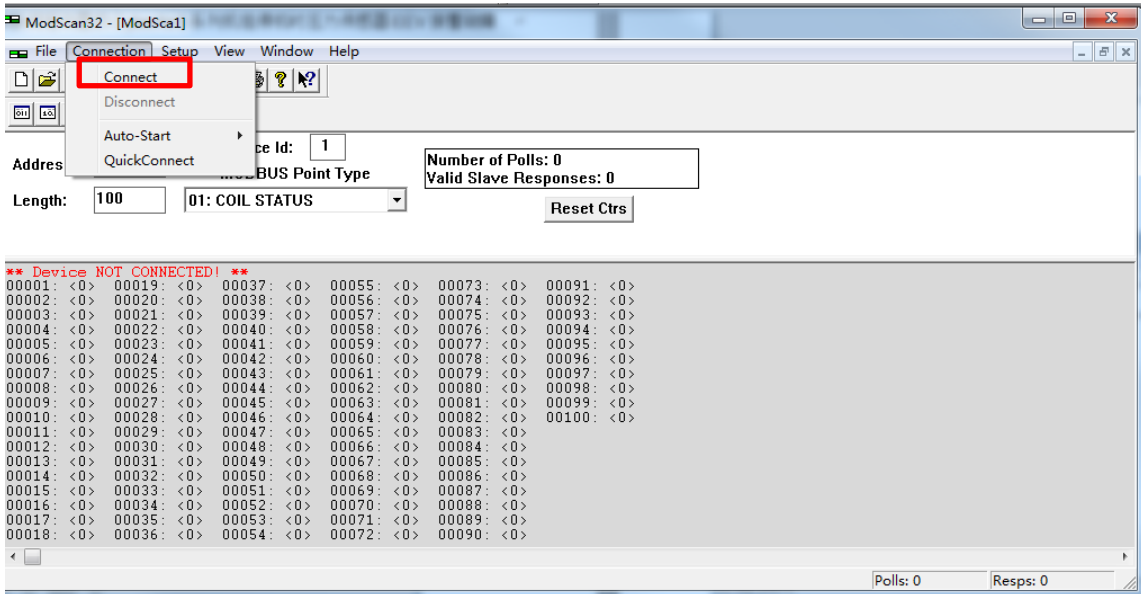
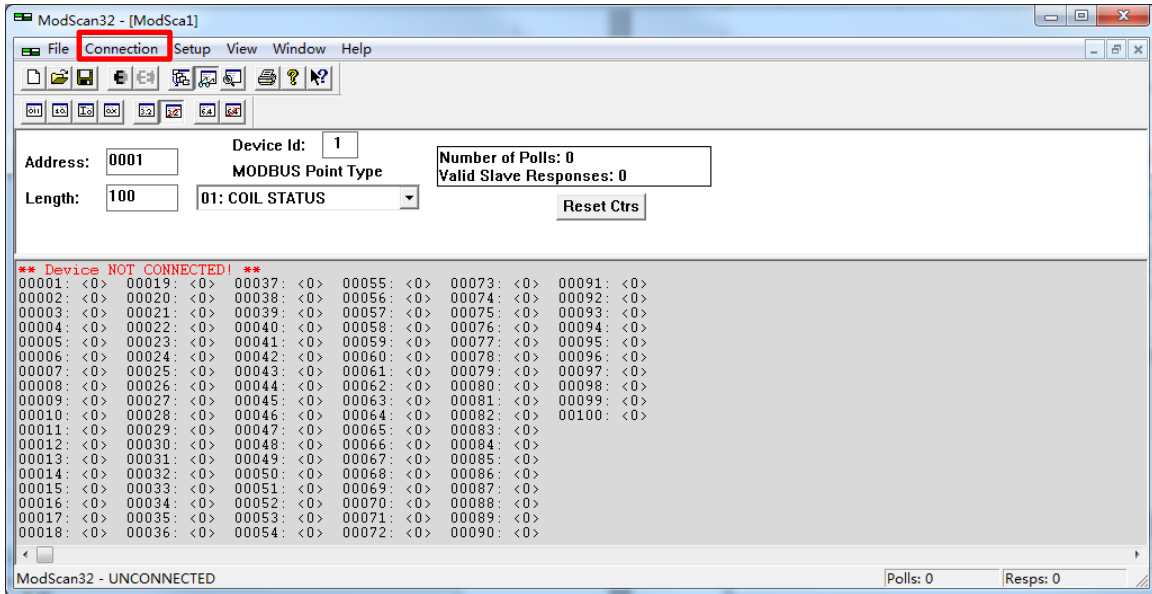
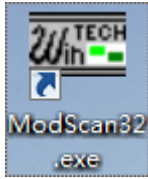
6903	fan1 alarm	风机 1 报警	0/1		2, (1)
6904	fan1 filter alarm	空气过滤网报警	0/1		2, (1)
7002	fan2 running	风机 2 运行	0/1		2, (1)
7003	fan2 alarm	风机 2 报警	0/1		2, (1)
7102	fan3 running	风机 3 运行	0/1		2, (1)
7103	fan3 alarm	风机 3 报警	0/1		2, (1)
8576	humidifier1 alarm	加湿器报警	0/1	ok/alarm	1, 2
10428	GE/CW-valve opening grade 1	CW1 阀开度	0..100	percent	4, (3)
13864	fan1 speed	风机 1 运转百分比	0..100	percent	3, (4)
14064	fan2 speed	风机 2 运转百分比	0..100	percent	3, (4)
14264	fan3 speed	风机 3 运转百分比	0..100	percent	3, (4)

CRS ***GES 型机组

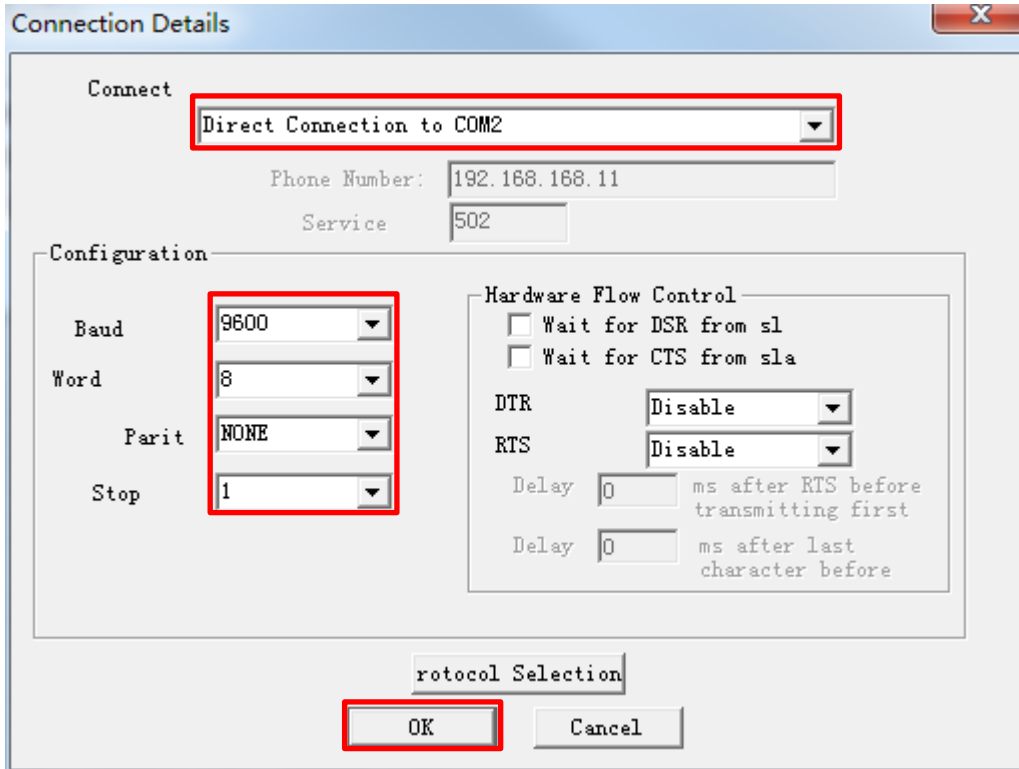
MODBU 地址	Description	中文描述	Modbus range	mapped meaning	Modbus function
1000	PC-STOP (monitoring), BMS stop 1	BMS 开机 (0), 关机 (1)	0/1	maybe on/unit off	1, (2), 5
1010	common alarm	公共报警	0/1	no alarm / alarm	2, (1)
1013	Unit on / off	机组开机/关机状态	0/1	off/on	2, (1)
1754	unit cooling	制冷模式	0/1	inactive/active	2, (1)
1755	unit heating	加热模式	0/1	inactive/active	2, (1)
1756	unit humidification	加湿模式	0/1	inactive/active	2, (1)
1757	unit dehumidification	除湿模式	0/1	inactive/active	2, (1)
2200	airflow 1	气流报警	0/1	ok/alarm	2, (1)
2203	highpressure 1	高压报警	0/1	ok/alarm	2, (1)
2206	water detector	漏水报警	0/1	ok/alarm	2, (1)
2208	fire/smoke	火灾报警	0/1	ok/alarm	2, (1)
2216	return air temp. too high alarm	回风温度太高报警	0/1	ok/alarm	2, (1)
2217	return air humid. too high alarm	回风湿度太高报警	0/1	ok/alarm	2, (1)
2218	supply air temp. too high alarm	送风温度太高报警	0/1	ok/alarm	2, (1)
2219	supply air humid. too high alarm	送风湿度太高报警	0/1	ok/alarm	2, (1)
2220	water temp. too high alarm	水温温度太高报警	0/1	ok/alarm	2, (1)
2221	return air temp. too low alarm	回风温度太低报警	0/1	ok/alarm	2, (1)
2222	return air humid. too low alarm	回风湿度太低报警	0/1	ok/alarm	2, (1)
2223	supply air temp. too low alarm	送风温度太低报警	0/1	ok/alarm	2, (1)
2224	supply air humid. too low alarm	送风湿度太低报警	0/1	ok/alarm	2, (1)
2225	water temp. too low alarm	水温温度太低报警	0/1	ok/alarm	2, (1)
2346	unit setpoint temperature day	温度设定值 (白天)	5,0..50,0 °C	5,0..50,0 °C	3, (4)
2348	unit setpoint temperature night	温度设定值 (夜晚)	5,0..50,0 °C	5,0..50,0 °C	3, (4)
2352	unit setpoint humidity	湿度设定值	5,0..90,0 %	5,0..90,0 %	3, (4)
2382	water in temperature 1 (chillers: primary)	进水温度 1	-100,0..100,0 °C	-100,0..100,0 °C	4, (3)
2384	unit return air temperature	回风温度	-100,0..100,0 °C	-100,0..100,0 °C	4, (3)
2386	unit supply air temperature	送风温度	-100,0..100,0 °C	-100,0..100,0 °C	4, (3)
2388	unit return air humidity	回风湿度	0,0..100,0 %	0,0..100,0 %	4, (3)
2390	unit supply air humidity	送风湿度	0,0..100,0 %	0,0..100,0 %	4, (3)
2412	water out temperature 1 (chillers: primary)	出水温度 1	-100,0..100,0 °C	-100,0..100,0 °C	4, (3)
2486	unit supply air temperature 3	送风温度 3	-100,0..100,0 °C	-100,0..100,0 °C	4, (3)
2488	unit return air temperature 2	回风温度 2	-100,0..100,0 °C	-100,0..100,0 °C	4, (3)
2490	unit return air temperature 3	回风温度 3	-100,0..100,0 °C	-100,0..100,0 °C	4, (3)
2492	unit return air temperature 1	回风温度 1	-100,0..100,0 °C	-100,0..100,0 °C	4, (3)
2494	unit supply air temperature 1	送风温度 1	-100,0..100,0 °C	-100,0..100,0 °C	4, (3)
2496	unit supply air temperature 2	送风温度 2	-100,0..100,0 °C	-100,0..100,0 °C	4, (3)
4403	compr. 1 running	压缩机运行	0/1		2, (1)
4405	compr. 1 low press. Alarm	低压报警	0/1	ok/alarm	2, (1)
4802	elec.-heating1 alarm	电加热报警	0/1		2, (1)
4803	elec.-heating1 running	电加热 1 运行	0/1		2, (1)
4903	elec.-heating2 running	电加热 2 运行	0/1		2, (1)

5003	elec.-heating3 running	电加热 3 运行	0/1		2, (1)
6402	humidifier1 running	加湿器运行	0/1		2, (1)
6902	fan1 running	风机 1 运行	0/1		2, (1)
6903	fan1 alarm	风机 1 报警	0/1		2, (1)
6904	fan1 filter alarm	空气过滤网报警	0/1		2, (1)
7002	fan2 running	风机 2 运行	0/1		2, (1)
7003	fan2 alarm	风机 2 报警	0/1		2, (1)
7102	fan3 running	风机 3 运行	0/1		2, (1)
7103	fan3 alarm	风机 3 报警	0/1		2, (1)
8568	drycooler1 alarm	干冷器 1 报警	0/1	ok/alarm	1, 2
8569	drycooler2 alarm	干冷器 2 报警	0/1	ok/alarm	1, 2
8570	drycooler3 alarm	干冷器 3 报警	0/1	ok/alarm	1, 2
8571	drycooler4 alarm	干冷器 4 报警	0/1	ok/alarm	1, 2
8574	pump3 alarm	水泵 3 报警	0/1	ok/alarm	1, 2
8575	pump4 alarm	水泵 4 报警	0/1	ok/alarm	1, 2
8576	humidifier1 alarm	加湿器报警	0/1	ok/alarm	1, 2
10428	GE/CW-valve opening grade 1	CW1 阀开度	0..100	percent	4, (3)
10448	GE/CW-valve opening grade 2	CW2 阀开度	0..100	percent	3, (4)
10624	G-valve 1 opening grade	G 阀 1 开度	0..100	percent	4, (3)
10724	G-valve 2 opening grade	G 阀 2 开度	0..100	percent	4, (3)
13864	fan1 speed	风机 1 运转百分比	0..100	percent	3, (4)
14064	fan2 speed	风机 2 运转百分比	0..100	percent	3, (4)
14264	fan3 speed	风机 3 运转百分比	0..100	percent	3, (4)

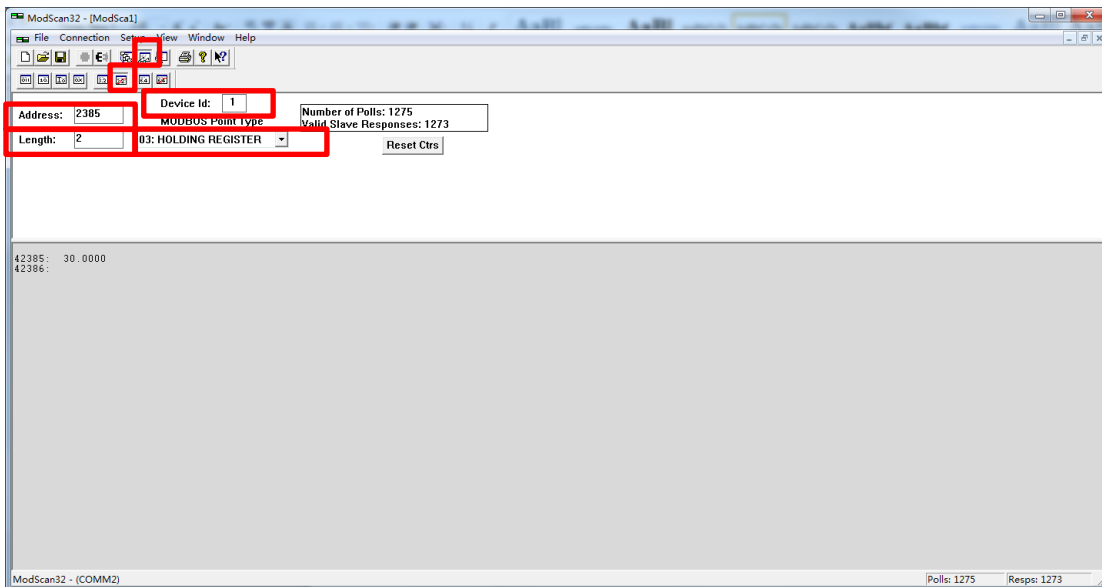
ModScan32 软件



确认 COM 口与前面电脑的一致



确认 Device Id 地址与需要测试的 C7000 IOC 主板的全球地址一致，
输入世图兹提供的 ModBus 地址+1,如果要查询回风温度即 2384+1=2385

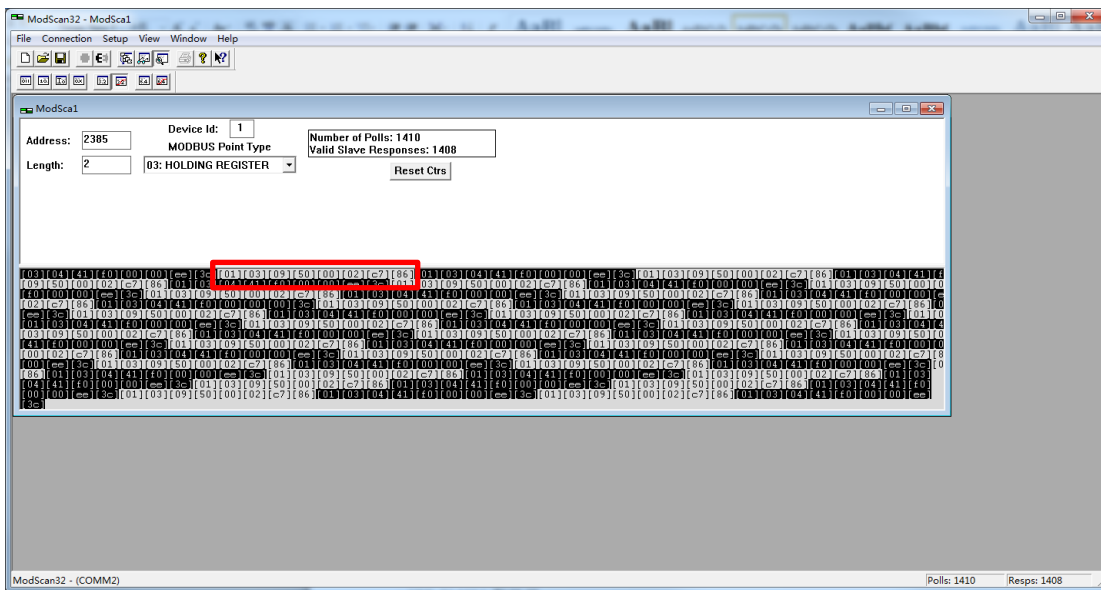
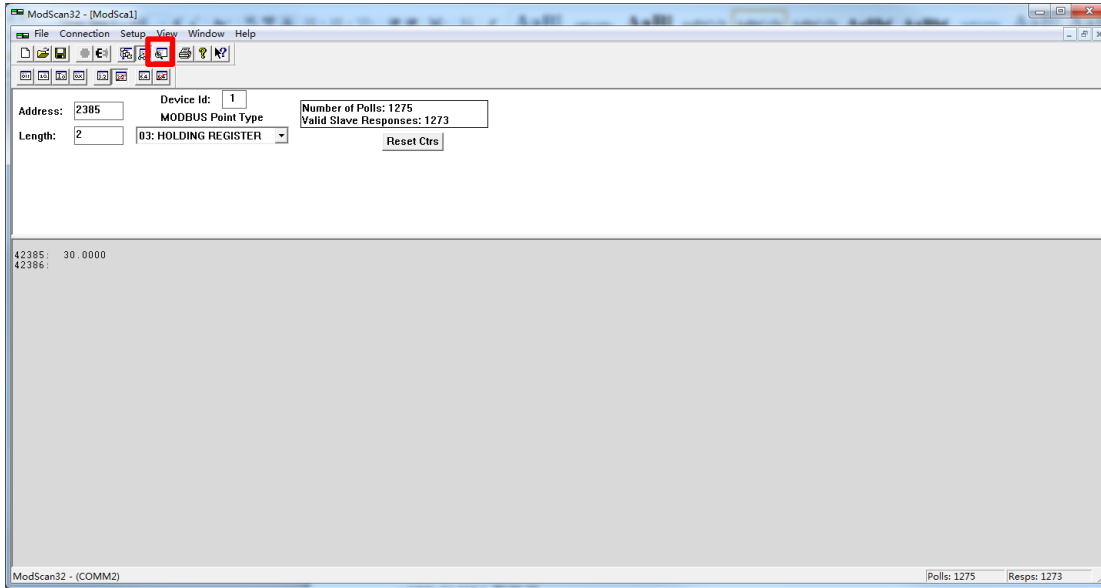


需要测试的 MODBUS 地址

MODBUS 地址	中文描述	allowed range	mapped meaning	BMSaccess	Modbusfunction
2384	回风温度	-1000.. 1000	-100, 0. . 100, 0°C	r	4, (3)

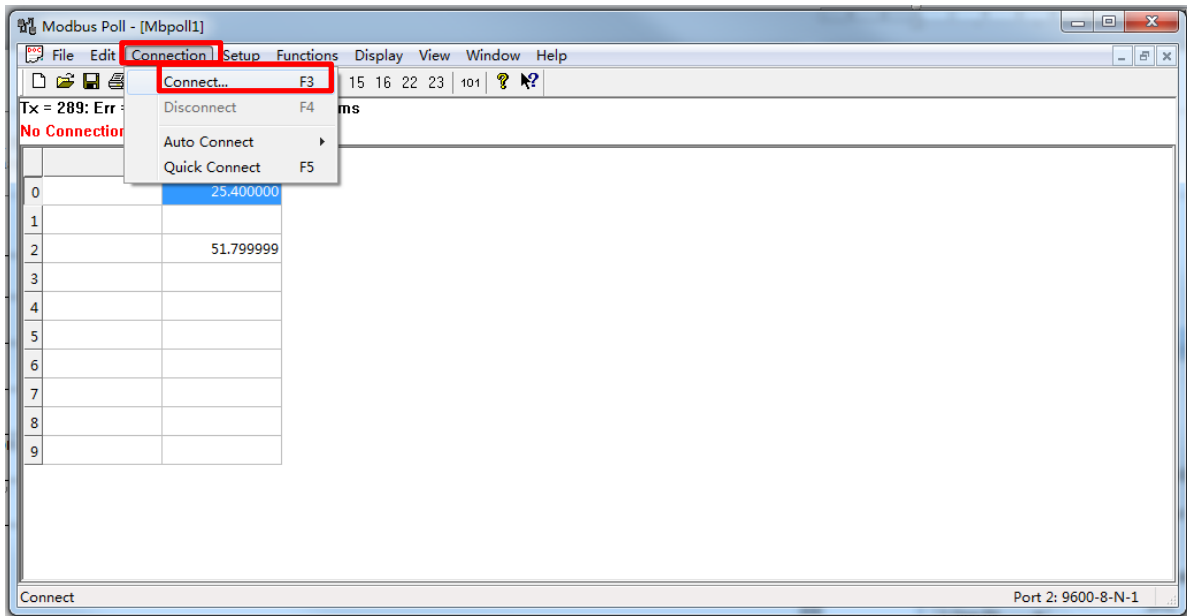
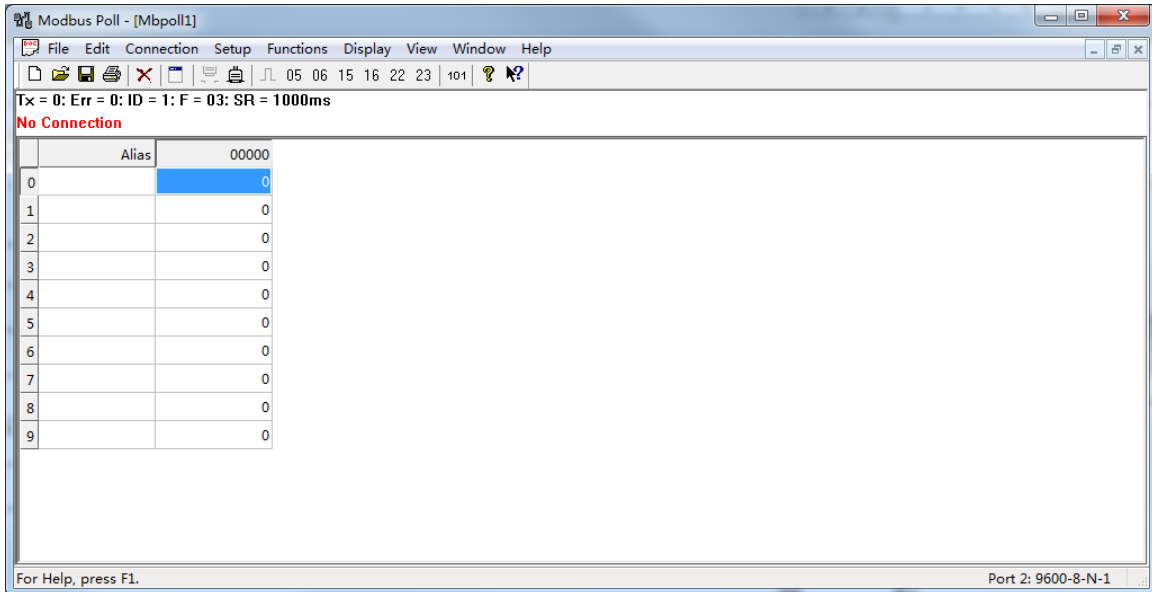
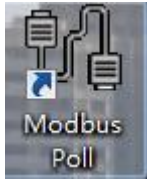
如何查看串口命令

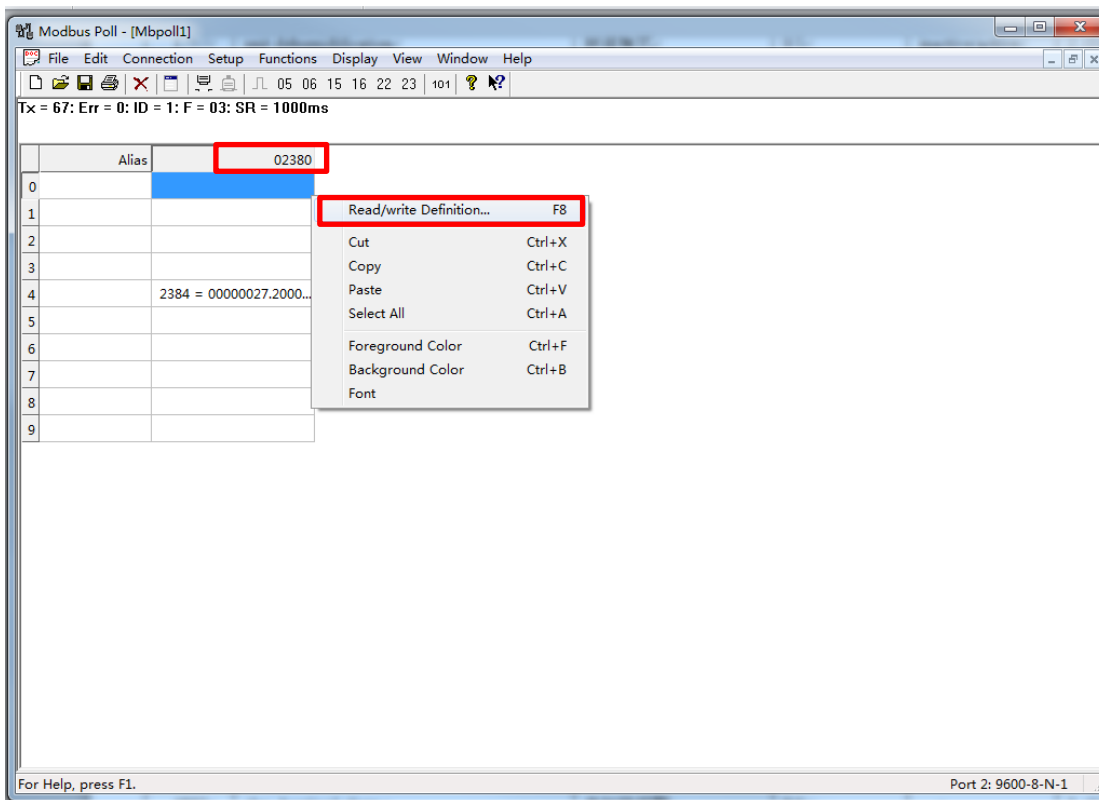
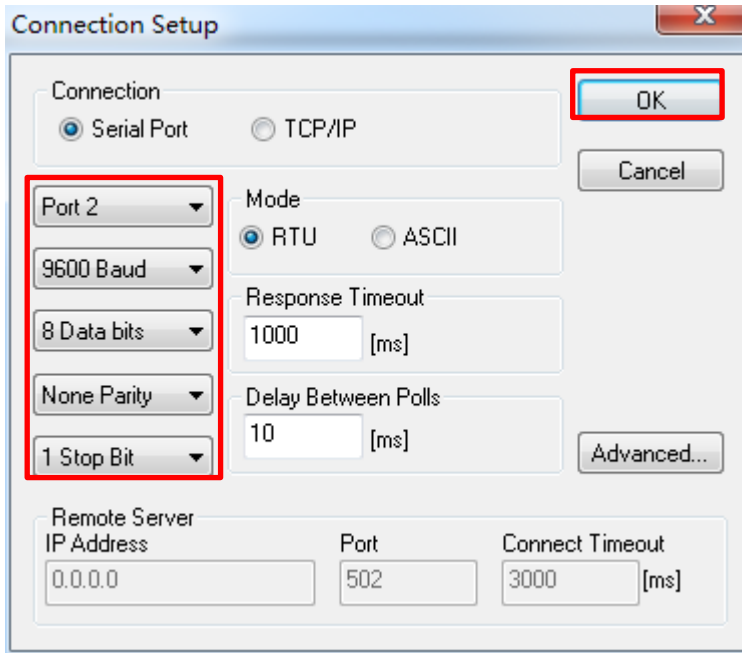
点击 show traffic



灰色数字发送串口命令: 01 03 09 50 00 02 C7 86

Modbus Poll 软件





Read/Write Definition

Slave ID: 1

Function: 04 Read Input Registers (3x)

Address: 2384

Quantity: 2

Scan Rate: 1000 ms

Read/Write Enabled

View

Rows: 10 20 50 100

Display: Float inverse

Buttons: OK, Cancel, Apply, Read/Write Once

Modbus Poll - [Mbpoll1]

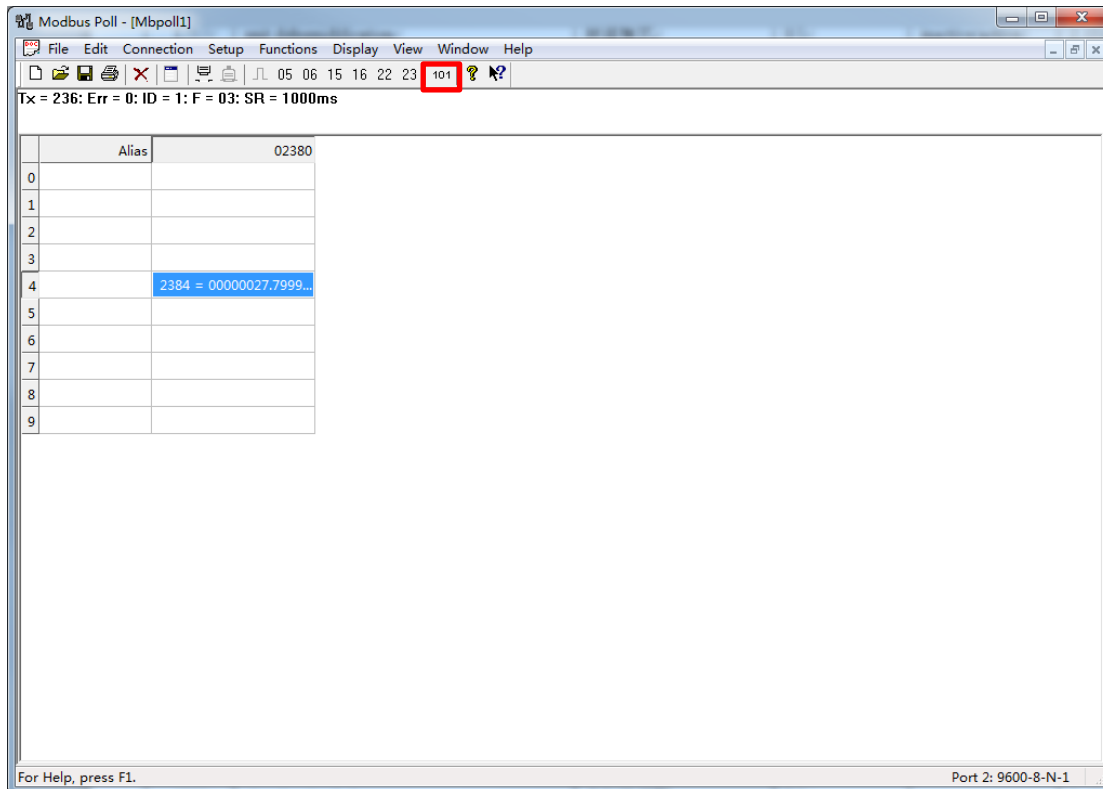
Tx = 236: Err = 0: ID = 1: F = 03: SR = 1000ms

	Alias	02380
0		
1		
2		
3		
4		2384 = 00000027.7999...
5		
6		
7		
8		
9		

For Help, press F1. Port 2: 9600-8-N-1

如何查看串口命令

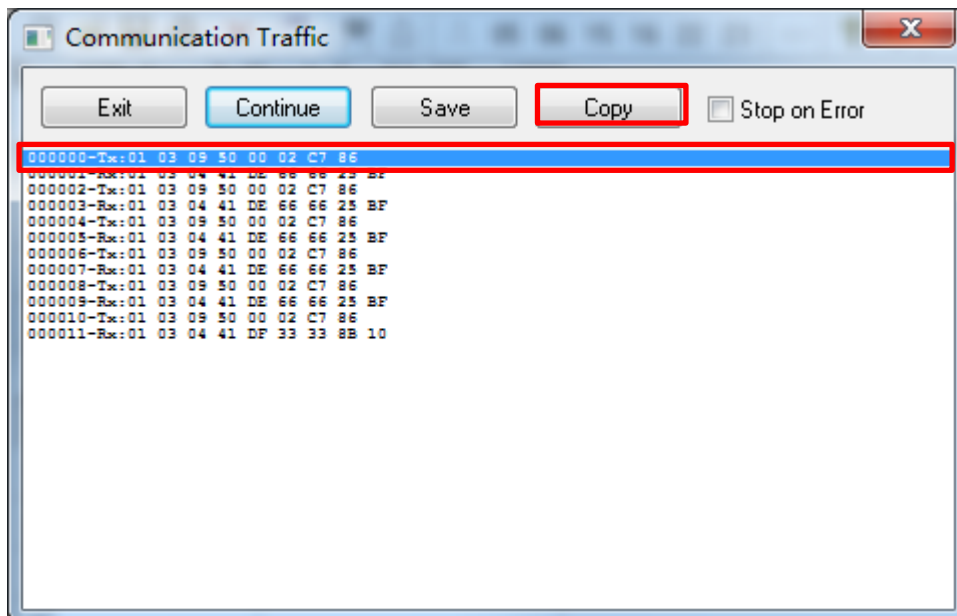
点击 101



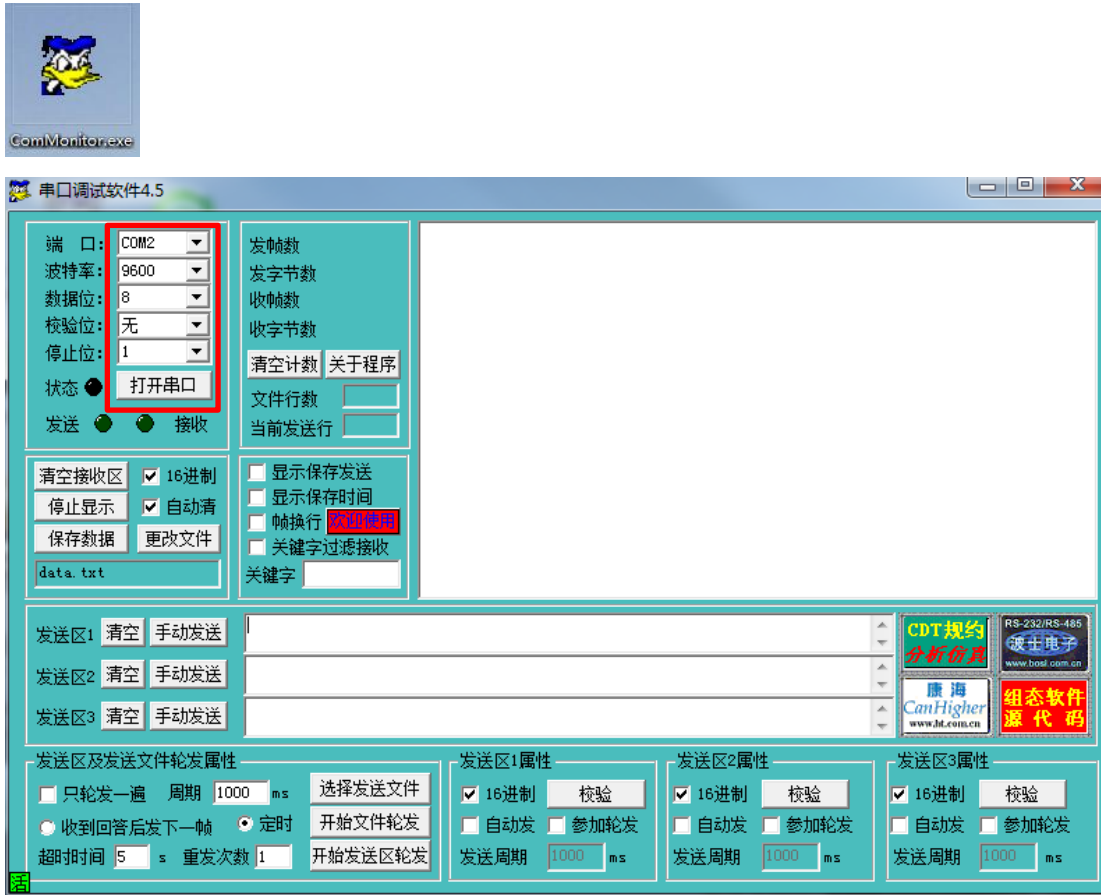
下面窗口就是显示串口命令

点击第一行然后点击 COPY

然后将串口命令粘贴下来: 000000-Tx:01 03 09 50 00 02 C7 86



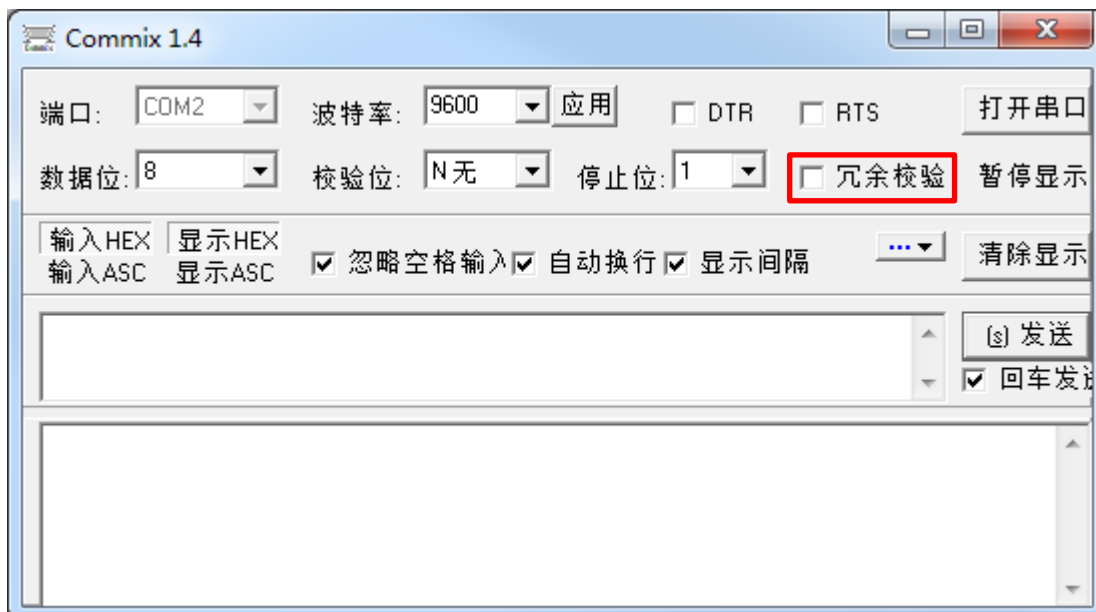
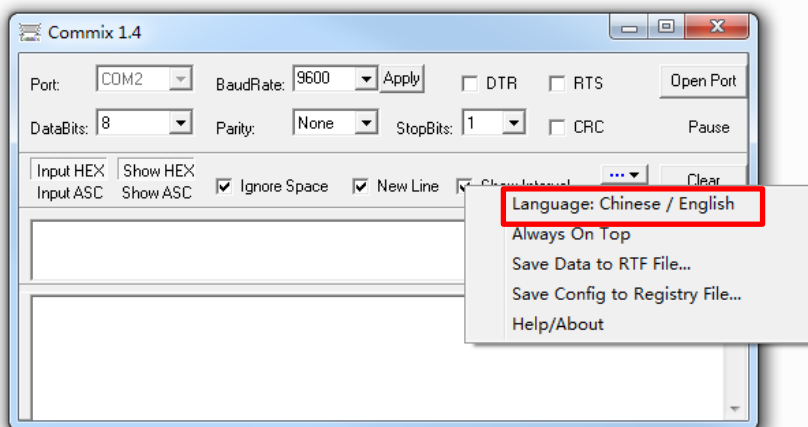
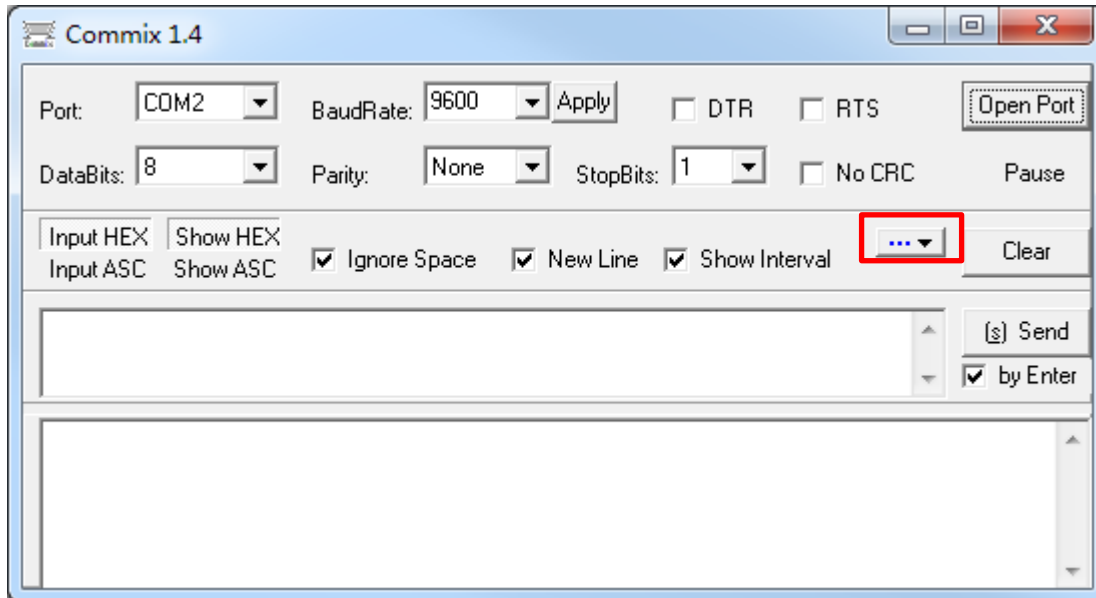
ComMonitor 串口调试软件

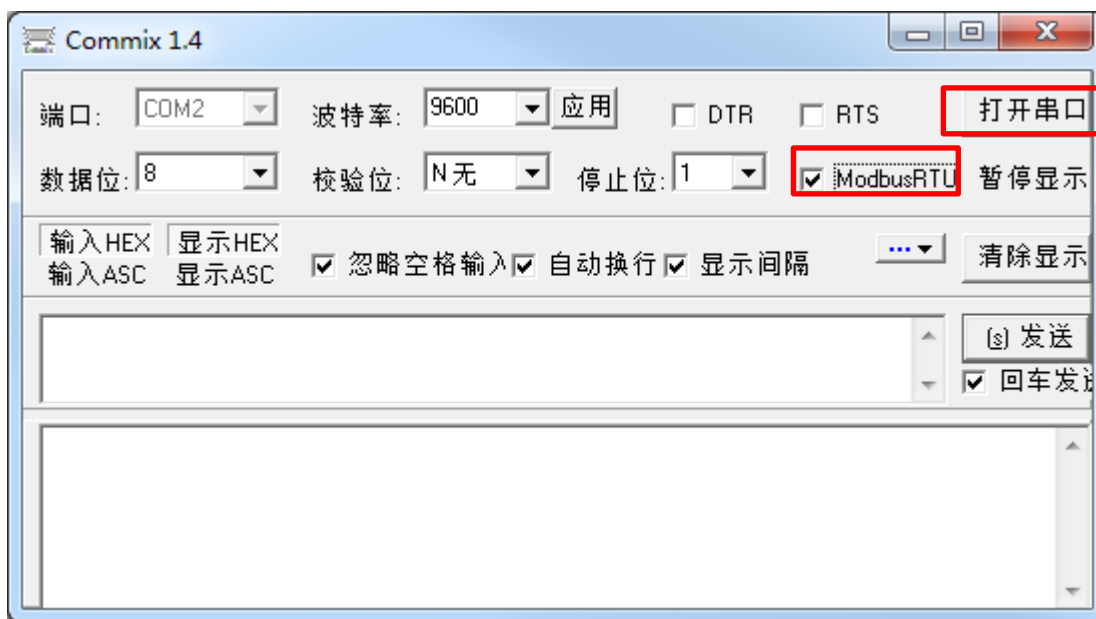
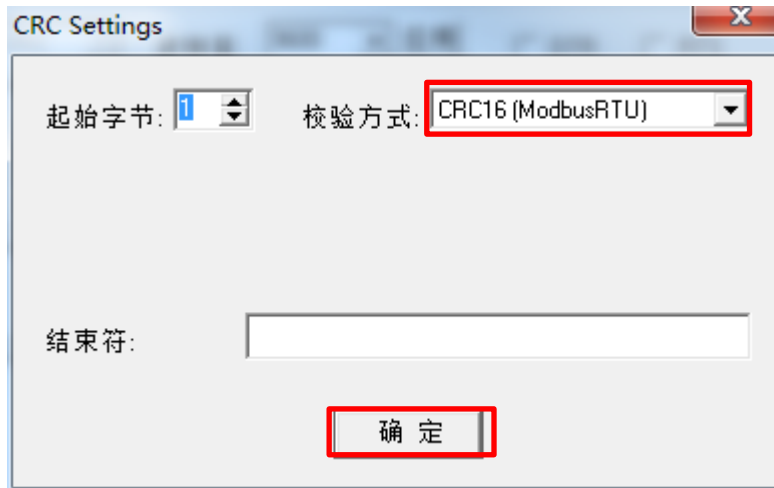


MODBUSadr.	串口命令	中文描述	allowed range	mapped meaning	BMSaccess	Modbusfunction
2384	01 03 09 50 00 02 C7 86	回风温度	-1000..1000	-100, 0..100, 0°C	r	4, (3)



Commix 工业控制串口调试软件





MODBUSadr.	串口命令	中文描述	allowed range	mapped meaning	BMSAccess	Modbusfunction
2384	01 03 09 50 00 02 C7 86	回风温度	-1000..1000	-100, 0..100, 0°C	r	4, (3)

